

Study of the resonance structures in the process  $e^+e^- \rightarrow \pi^+\pi^-J/\psi$ 

M. Ablikim,<sup>1</sup> M. N. Achasov,<sup>10,b</sup> P. Adlarson,<sup>68</sup> M. Albrecht,<sup>4</sup> R. Aliberti,<sup>28</sup> A. Amoroso,<sup>67a,67c</sup> M. R. An,<sup>32</sup> Q. An,<sup>64,50</sup> X. H. Bai,<sup>58</sup> Y. Bai,<sup>49</sup> O. Bakina,<sup>29</sup> R. Baldini Ferroli,<sup>23a</sup> I. Balossino,<sup>24a</sup> Y. Ban,<sup>39,h</sup> V. Batozskaya,<sup>1,37</sup> D. Becker,<sup>28</sup> K. Begzsuren,<sup>26</sup> N. Berger,<sup>28</sup> M. Bertani,<sup>23a</sup> D. Bettoni,<sup>24a</sup> F. Bianchi,<sup>67a,67c</sup> J. Bloms,<sup>61</sup> A. Bortone,<sup>67a,67c</sup> I. Boyko,<sup>29</sup> R. A. Briere,<sup>5</sup> A. Brueggemann,<sup>61</sup> H. Cai,<sup>69</sup> X. Cai,<sup>1,50</sup> A. Calcaterra,<sup>23a</sup> G. F. Cao,<sup>1,55</sup> N. Cao,<sup>1,55</sup> S. A. Cetin,<sup>54a</sup> J. F. Chang,<sup>1,50</sup> W. L. Chang,<sup>1,55</sup> G. Chelkov,<sup>29,a</sup> C. Chen,<sup>36</sup> G. Chen,<sup>1</sup> H. S. Chen,<sup>1,55</sup> M. L. Chen,<sup>1,50</sup> S. J. Chen,<sup>35</sup> T. Chen,<sup>1</sup> X. R. Chen,<sup>25</sup> X. T. Chen,<sup>1</sup> Y. B. Chen,<sup>1,50</sup> Z. J. Chen,<sup>20,i</sup> W. S. Cheng,<sup>67c</sup> X. Chu,<sup>36</sup> G. Cibinetto,<sup>24a</sup> F. Cossio,<sup>67c</sup> J. J. Cui,<sup>42</sup> H. L. Dai,<sup>1,50</sup> J. P. Dai,<sup>71</sup> A. Dbeyssi,<sup>14</sup> R. E. de Boer,<sup>4</sup> D. Dedovich,<sup>29</sup> Z. Y. Deng,<sup>1</sup> A. Denig,<sup>28</sup> I. Denysenko,<sup>29</sup> M. Destefanis,<sup>67a,67c</sup> F. De Mori,<sup>67a,67c</sup> Y. Ding,<sup>33</sup> J. Dong,<sup>1,50</sup> L. Y. Dong,<sup>1,55</sup> M. Y. Dong,<sup>1,50,55</sup> X. Dong,<sup>69</sup> S. X. Du,<sup>73</sup> P. Egorov,<sup>29,a</sup> Y. L. Fan,<sup>69</sup> J. Fang,<sup>1,50</sup> S. S. Fang,<sup>1,55</sup> W. X. Fang,<sup>1</sup> Y. Fang,<sup>1</sup> R. Farinelli,<sup>24a</sup> L. Fava,<sup>67b,67c</sup> F. Feldbauer,<sup>4</sup> G. Felici,<sup>23a</sup> C. Q. Feng,<sup>64,50</sup> J. H. Feng,<sup>51</sup> K. Fischer,<sup>62</sup> M. Fritsch,<sup>4</sup> C. F. Fritsch,<sup>61</sup> C. D. Fu,<sup>1</sup> H. Gao,<sup>55</sup> Y. N. Gao,<sup>39,h</sup> Yang Gao,<sup>64,50</sup> S. Garbolino,<sup>67c</sup> I. Garzia,<sup>24a,24b</sup> P. T. Ge,<sup>69</sup> C. Geng,<sup>51</sup> E. M. Gersabeck,<sup>59</sup> A. Gilman,<sup>62</sup> K. Goetzen,<sup>11</sup> L. Gong,<sup>33</sup> W. X. Gong,<sup>1,50</sup> W. Gradl,<sup>28</sup> M. Greco,<sup>67a,67c</sup> M. H. Gu,<sup>1,50</sup> C. Y. Guan,<sup>1,55</sup> A. Q. Guo,<sup>25</sup> L. B. Guo,<sup>34</sup> R. P. Guo,<sup>41</sup> Y. P. Guo,<sup>9,g</sup> A. Guskov,<sup>29,a</sup> T. T. Han,<sup>42</sup> W. Y. Han,<sup>32</sup> X. Q. Hao,<sup>15</sup> F. A. Harris,<sup>57</sup> K. K. He,<sup>47</sup> K. L. He,<sup>1,55</sup> F. H. Heinsius,<sup>4</sup> C. H. Heinz,<sup>28</sup> Y. K. Heng,<sup>1,50,55</sup> C. Herold,<sup>52</sup> M. Himmelreich,<sup>11,e</sup> T. Holtmann,<sup>4</sup> G. Y. Hou,<sup>1,55</sup> Y. R. Hou,<sup>55</sup> Z. L. Hou,<sup>1</sup> H. M. Hu,<sup>1,55</sup> J. F. Hu,<sup>48,j</sup> T. Hu,<sup>1,50,55</sup> Y. Hu,<sup>1</sup> G. S. Huang,<sup>64,50</sup> K. X. Huang,<sup>51</sup> L. Q. Huang,<sup>65</sup> L. Q. Huang,<sup>25</sup> X. T. Huang,<sup>42</sup> Y. P. Huang,<sup>1</sup> Z. Huang,<sup>39,h</sup> T. Hussain,<sup>66</sup> N. Hüsken,<sup>22,28</sup> W. Imoehl,<sup>22</sup> M. Irshad,<sup>64,50</sup> J. Jackson,<sup>22</sup> S. Jaeger,<sup>4</sup> S. Janchiv,<sup>26</sup> Q. Ji,<sup>1</sup> Q. P. Ji,<sup>15</sup> X. B. Ji,<sup>1,55</sup> X. L. Ji,<sup>1,50</sup> Y. Y. Ji,<sup>42</sup> Z. K. Jia,<sup>64,50</sup> H. B. Jiang,<sup>42</sup> S. S. Jiang,<sup>32</sup> X. S. Jiang,<sup>1,50,55</sup> Y. Jiang,<sup>55</sup> J. B. Jiao,<sup>42</sup> Z. Jiao,<sup>18</sup> S. Jin,<sup>35</sup> Y. Jin,<sup>58</sup> M. Q. Jing,<sup>1,55</sup> T. Johansson,<sup>68</sup> N. Kalantar-Nayestanaki,<sup>56</sup> X. S. Kang,<sup>33</sup> R. Kappert,<sup>56</sup> M. Kavatsyuk,<sup>56</sup> B. C. Ke,<sup>73</sup> I. K. Keshk,<sup>4</sup> A. Khoukaz,<sup>61</sup> P. Kiese,<sup>28</sup> R. Kiuchi,<sup>1</sup> R. Kliemt,<sup>11</sup> L. Koch,<sup>30</sup> O. B. Kolcu,<sup>54a</sup> B. Kopf,<sup>4</sup> M. Kuemmel,<sup>4</sup> M. Kuessner,<sup>4</sup> A. Kupsc,<sup>37,68</sup> W. Kühn,<sup>30</sup> J. J. Lane,<sup>59</sup> J. S. Lange,<sup>30</sup> P. Larin,<sup>14</sup> A. Lavania,<sup>21</sup> L. Lavezzi,<sup>67a,67c</sup> Z. H. Lei,<sup>64,50</sup> H. Leithoff,<sup>28</sup> M. Lellmann,<sup>28</sup> T. Lenz,<sup>28</sup> C. Li,<sup>36</sup> C. Li,<sup>40</sup> C. H. Li,<sup>32</sup> Cheng Li,<sup>64,50</sup> D. M. Li,<sup>73</sup> F. Li,<sup>1,50</sup> G. Li,<sup>1</sup> H. Li,<sup>44</sup> H. Li,<sup>64,50</sup> H. B. Li,<sup>1,55</sup> H. J. Li,<sup>15</sup> H. N. Li,<sup>48,j</sup> J. Q. Li,<sup>4</sup> J. S. Li,<sup>51</sup> J. W. Li,<sup>42</sup> Ke Li,<sup>1</sup> L. J. Li,<sup>1</sup> L. K. Li,<sup>1</sup> Lei Li,<sup>3</sup> M. H. Li,<sup>36</sup> P. R. Li,<sup>31,k,l</sup> S. X. Li,<sup>9</sup> S. Y. Li,<sup>53</sup> T. Li,<sup>42</sup> W. D. Li,<sup>1,55</sup> W. G. Li,<sup>1</sup> X. H. Li,<sup>64,50</sup> X. L. Li,<sup>42</sup> Xiaoyu Li,<sup>1,55</sup> Z. Y. Li,<sup>51</sup> H. Liang,<sup>1,55</sup> H. Liang,<sup>64,50</sup> H. Liang,<sup>27</sup> Y. F. Liang,<sup>46</sup> Y. T. Liang,<sup>25</sup> G. R. Liao,<sup>12</sup> L. Z. Liao,<sup>42</sup> J. Libby,<sup>21</sup> A. Limphirat,<sup>52</sup> C. X. Lin,<sup>51</sup> D. X. Lin,<sup>25</sup> T. Lin,<sup>1</sup> B. J. Liu,<sup>1</sup> C. X. Liu,<sup>1</sup> D. Liu,<sup>14,64</sup> F. H. Liu,<sup>45</sup> Fang Liu,<sup>1</sup> Feng Liu,<sup>6</sup> G. M. Liu,<sup>48,j</sup> H. Liu,<sup>31,k,l</sup> H. M. Liu,<sup>1,55</sup> Huanhuan Liu,<sup>1</sup> Huihui Liu,<sup>16</sup> J. B. Liu,<sup>64,50</sup> J. L. Liu,<sup>65</sup> J. Y. Liu,<sup>1,55</sup> K. Liu,<sup>1</sup> K. Y. Liu,<sup>33</sup> Ke Liu,<sup>17</sup> L. Liu,<sup>64,50</sup> M. H. Liu,<sup>9,g</sup> P. L. Liu,<sup>1</sup> Q. Liu,<sup>55</sup> S. B. Liu,<sup>64,50</sup> T. Liu,<sup>9,g</sup> W. K. Liu,<sup>36</sup> W. M. Liu,<sup>64,50</sup> X. Liu,<sup>31,k,l</sup> Y. Liu,<sup>31,k,l</sup> Y. B. Liu,<sup>36</sup> Z. A. Liu,<sup>1,50,55</sup> Z. Q. Liu,<sup>42</sup> X. C. Lou,<sup>1,50,55</sup> F. X. Lu,<sup>51</sup> H. J. Lu,<sup>18</sup> J. G. Lu,<sup>1,50</sup> X. L. Lu,<sup>1</sup> Y. Lu,<sup>1</sup> Y. P. Lu,<sup>1,50</sup> Z. H. Lu,<sup>1</sup> C. L. Luo,<sup>34</sup> M. X. Luo,<sup>72</sup> T. Luo,<sup>9,g</sup> X. L. Luo,<sup>1,50</sup> X. R. Lyu,<sup>55</sup> Y. F. Lyu,<sup>36</sup> F. C. Ma,<sup>33</sup> H. L. Ma,<sup>1</sup> L. L. Ma,<sup>42</sup> M. M. Ma,<sup>1,55</sup> Q. M. Ma,<sup>1</sup> R. Q. Ma,<sup>1,55</sup> R. T. Ma,<sup>55</sup> X. Y. Ma,<sup>1,50</sup> Y. Ma,<sup>39,h</sup> F. E. Maas,<sup>14</sup> M. Maggiora,<sup>67a,67c</sup> S. Maldaner,<sup>4</sup> S. Malde,<sup>62</sup> Q. A. Malik,<sup>66</sup> A. Mangoni,<sup>23b</sup> Y. J. Mao,<sup>39,h</sup> Z. P. Mao,<sup>1</sup> S. Marcello,<sup>67a,67c</sup> Z. X. Meng,<sup>58</sup> J. G. Messchendorp,<sup>56,d</sup> G. Mezzadri,<sup>24a</sup> H. Miao,<sup>1</sup> T. J. Min,<sup>35</sup> R. E. Mitchell,<sup>22</sup> X. H. Mo,<sup>1,50,55</sup> N. Yu. Muchnoi,<sup>10,b</sup> H. Muramatsu,<sup>60</sup> Y. Nefedov,<sup>29</sup> F. Nerling,<sup>11,e</sup> I. B. Nikolaev,<sup>10,b</sup> Z. Ning,<sup>1,50</sup> S. Nisar,<sup>8,m</sup> Y. Niu,<sup>42</sup> S. L. Olsen,<sup>55</sup> Q. Ouyang,<sup>1,50,55</sup> S. Pacetti,<sup>23b,23c</sup> X. Pan,<sup>9,g</sup> Y. Pan,<sup>59</sup> A. Pathak,<sup>27</sup> M. Pelizaeus,<sup>4</sup> H. P. Peng,<sup>64,50</sup> K. Peters,<sup>11,e</sup> J. Pettersson,<sup>68</sup> J. L. Ping,<sup>34</sup> R. G. Ping,<sup>1,55</sup> S. Plura,<sup>28</sup> S. Pogodin,<sup>29</sup> R. Poling,<sup>60</sup> V. Prasad,<sup>64,50</sup> F. Z. Qi,<sup>1</sup> H. Qi,<sup>64,50</sup> H. R. Qi,<sup>53</sup> M. Qi,<sup>35</sup> T. Y. Qi,<sup>9,g</sup> S. Qian,<sup>1,50</sup> W. B. Qian,<sup>55</sup> Z. Qian,<sup>51</sup> C. F. Qiao,<sup>55</sup> J. J. Qin,<sup>65</sup> L. Q. Qin,<sup>12</sup> X. P. Qin,<sup>9,g</sup> X. S. Qin,<sup>42</sup> Z. H. Qin,<sup>1,50</sup> J. F. Qiu,<sup>1</sup> S. Q. Qu,<sup>53</sup> K. H. Rashid,<sup>66</sup> C. F. Redmer,<sup>28</sup> K. J. Ren,<sup>32</sup> A. Rivetti,<sup>67c</sup> V. Rodin,<sup>56</sup> M. Rolo,<sup>67c</sup> G. Rong,<sup>1,55</sup> Ch. Rosner,<sup>14</sup> S. N. Ruan,<sup>36</sup> H. S. Sang,<sup>64</sup> A. Sarantsev,<sup>29,c</sup> Y. Schelhaas,<sup>28</sup> C. Schnier,<sup>4</sup> K. Schoenning,<sup>68</sup> M. Scodreggio,<sup>24a,24b</sup> K. Y. Shan,<sup>9,g</sup> W. Shan,<sup>19</sup> X. Y. Shan,<sup>64,50</sup> J. F. Shangguan,<sup>47</sup> L. G. Shao,<sup>1,55</sup> M. Shao,<sup>64,50</sup> C. P. Shen,<sup>9,g</sup> H. F. Shen,<sup>1,55</sup> X. Y. Shen,<sup>1,55</sup> B.-A. Shi,<sup>55</sup> H. C. Shi,<sup>64,50</sup> J. Y. Shi,<sup>1</sup> R. S. Shi,<sup>1,55</sup> X. Shi,<sup>1,50</sup> X. D. Shi,<sup>64,50</sup> J. J. Song,<sup>15</sup> W. M. Song,<sup>27,1</sup> Y. X. Song,<sup>39,h</sup> S. Sosio,<sup>67a,67c</sup> S. Spataro,<sup>67a,67c</sup> F. Stieler,<sup>28</sup> K. X. Su,<sup>69</sup> P. P. Su,<sup>47</sup> Y.-J. Su,<sup>55</sup> G. X. Sun,<sup>1</sup> H. Sun,<sup>55</sup> H. K. Sun,<sup>1</sup> J. F. Sun,<sup>15</sup> L. Sun,<sup>69</sup> S. S. Sun,<sup>1,55</sup> T. Sun,<sup>1,55</sup> W. Y. Sun,<sup>27</sup> X. Sun,<sup>20,i</sup> Y. J. Sun,<sup>64,50</sup> Y. Z. Sun,<sup>1</sup> Z. T. Sun,<sup>42</sup> Y. H. Tan,<sup>69</sup> Y. X. Tan,<sup>64,50</sup> C. J. Tang,<sup>46</sup> G. Y. Tang,<sup>1</sup> J. Tang,<sup>51</sup> L. Y. Tao,<sup>65</sup> Q. T. Tao,<sup>20,i</sup> J. X. Teng,<sup>64,50</sup> V. Thoren,<sup>68</sup> W. H. Tian,<sup>44</sup> Y. T. Tian,<sup>25</sup> I. Uman,<sup>54b</sup> B. Wang,<sup>1</sup> B. L. Wang,<sup>55</sup> D. Y. Wang,<sup>39,h</sup> F. Wang,<sup>65</sup> H. J. Wang,<sup>31,k,l</sup> H. P. Wang,<sup>1,55</sup> K. Wang,<sup>1,50</sup> L. L. Wang,<sup>1</sup> M. Wang,<sup>42</sup> M. Z. Wang,<sup>39,h</sup> Meng Wang,<sup>1,55</sup> S. Wang,<sup>9,g</sup> T. Wang,<sup>9,g</sup> T. J. Wang,<sup>36</sup> W. Wang,<sup>51</sup> W. H. Wang,<sup>69</sup> W. P. Wang,<sup>64,50</sup> X. Wang,<sup>39,h</sup> X. F. Wang,<sup>31,k,l</sup> X. L. Wang,<sup>9,g</sup> Y. D. Wang,<sup>38</sup> Y. F. Wang,<sup>1,50,55</sup> Y. H. Wang,<sup>40</sup> Y. Q. Wang,<sup>1</sup> Ying Wang,<sup>51</sup> Z. Wang,<sup>1,50</sup> Z. Y. Wang,<sup>1,55</sup> Ziyi Wang,<sup>55</sup> D. H. Wei,<sup>12</sup> F. Weidner,<sup>61</sup> S. P. Wen,<sup>1</sup> D. J. White,<sup>59</sup> U. Wiedner,<sup>4</sup> G. Wilkinson,<sup>62</sup> M. Wolke,<sup>68</sup> L. Wollenberg,<sup>4</sup> J. F. Wu,<sup>1,55</sup> L. H. Wu,<sup>1</sup> L. J. Wu,<sup>1,55</sup> X. Wu,<sup>9,g</sup> X. H. Wu,<sup>27</sup> Y. Wu,<sup>64</sup> Z. Wu,<sup>1,50</sup> L. Xia,<sup>64,50</sup> T. Xiang,<sup>39,h</sup> D. Xiao,<sup>31,k,l</sup> H. Xiao,<sup>9,g</sup> S. Y. Xiao,<sup>1</sup> Y. L. Xiao,<sup>9,g</sup> Z. J. Xiao,<sup>34</sup> X. H. Xie,<sup>39,h</sup> Y. Xie,<sup>42</sup> Y. G. Xie,<sup>1,50</sup> Y. H. Xie,<sup>6</sup> Z. P. Xie,<sup>64,50</sup> T. Y. Xing,<sup>1,55</sup> C. F. Xu,<sup>1</sup> C. J. Xu,<sup>51</sup> G. F. Xu,<sup>1</sup> Q. J. Xu,<sup>13</sup> S. Y. Xu,<sup>63</sup> X. P. Xu,<sup>47</sup> Y. C. Xu,<sup>55</sup> F. Yan,<sup>9,g</sup>

L. Yan,<sup>9,g</sup> W. B. Yan,<sup>64,50</sup> W. C. Yan,<sup>73</sup> H. J. Yang,<sup>43,f</sup> H. L. Yang,<sup>27</sup> H. X. Yang,<sup>1</sup> L. Yang,<sup>44</sup> S. L. Yang,<sup>55</sup> Tao Yang,<sup>1</sup> Y. X. Yang,<sup>1,55</sup> Yifan Yang,<sup>1,55</sup> M. Ye,<sup>1,50</sup> M. H. Ye,<sup>7</sup> J. H. Yin,<sup>1</sup> Z. Y. You,<sup>51</sup> B. X. Yu,<sup>1,50,55</sup> C. X. Yu,<sup>36</sup> G. Yu,<sup>1,55</sup> T. Yu,<sup>65</sup> C. Z. Yuan,<sup>1,55</sup> L. Yuan,<sup>2</sup> S. C. Yuan,<sup>1</sup> X. Q. Yuan,<sup>1</sup> Y. Yuan,<sup>1,55</sup> Z. Y. Yuan,<sup>51</sup> C. X. Yue,<sup>32</sup> A. A. Zafar,<sup>66</sup> F. R. Zeng,<sup>42</sup> X. Zeng,<sup>6</sup> Y. Zeng,<sup>20,i</sup> Y. H. Zhan,<sup>51</sup> A. Q. Zhang,<sup>1</sup> B. L. Zhang,<sup>1</sup> B. X. Zhang,<sup>1</sup> D. H. Zhang,<sup>36</sup> G. Y. Zhang,<sup>15</sup> H. Zhang,<sup>64</sup> H. H. Zhang,<sup>51</sup> H. H. Zhang,<sup>27</sup> H. Y. Zhang,<sup>1,50</sup> J. L. Zhang,<sup>70</sup> J. Q. Zhang,<sup>34</sup> J. W. Zhang,<sup>1,50,55</sup> J. X. Zhang,<sup>31,k,l</sup> J. Y. Zhang,<sup>1</sup> J. Z. Zhang,<sup>1,55</sup> Jianyu Zhang,<sup>1,55</sup> Jiawei Zhang,<sup>1,55</sup> L. M. Zhang,<sup>53</sup> L. Q. Zhang,<sup>51</sup> Lei Zhang,<sup>35</sup> P. Zhang,<sup>1</sup> Q. Y. Zhang,<sup>32,73</sup> Shulei Zhang,<sup>20,i</sup> X. D. Zhang,<sup>38</sup> X. M. Zhang,<sup>1</sup> X. Y. Zhang,<sup>42</sup> X. Y. Zhang,<sup>47</sup> Y. Zhang,<sup>62</sup> Y. T. Zhang,<sup>73</sup> Y. H. Zhang,<sup>1,50</sup> Yan Zhang,<sup>64,50</sup> Yao Zhang,<sup>1</sup> Z. H. Zhang,<sup>1</sup> Z. Y. Zhang,<sup>36</sup> Z. Y. Zhang,<sup>69</sup> G. Zhao,<sup>1</sup> J. Zhao,<sup>32</sup> J. Y. Zhao,<sup>1,55</sup> J. Z. Zhao,<sup>1,50</sup> Lei Zhao,<sup>64,50</sup> Ling Zhao,<sup>1</sup> M. G. Zhao,<sup>36</sup> Q. Zhao,<sup>1</sup> S. J. Zhao,<sup>73</sup> Y. B. Zhao,<sup>1,50</sup> Y. X. Zhao,<sup>25</sup> Z. G. Zhao,<sup>64,50</sup> A. Zhemchugov,<sup>29,a</sup> B. Zheng,<sup>65</sup> J. P. Zheng,<sup>1,50</sup> Y. H. Zheng,<sup>55</sup> B. Zhong,<sup>34</sup> C. Zhong,<sup>65</sup> X. Zhong,<sup>51</sup> H. Zhou,<sup>42</sup> L. P. Zhou,<sup>1,55</sup> X. Zhou,<sup>69</sup> X. K. Zhou,<sup>55</sup> X. R. Zhou,<sup>64,50</sup> X. Y. Zhou,<sup>32</sup> Y. Z. Zhou,<sup>9,g</sup> J. Zhu,<sup>36</sup> K. Zhu,<sup>1</sup> K. J. Zhu,<sup>1,50,55</sup> L. X. Zhu,<sup>55</sup> S. H. Zhu,<sup>63</sup> T. J. Zhu,<sup>70</sup> W. J. Zhu,<sup>9,g</sup> Y. C. Zhu,<sup>64,50</sup> Z. A. Zhu,<sup>1,55</sup> B. S. Zou,<sup>1</sup> and J. H. Zou<sup>1</sup>

(BESIII Collaboration)

<sup>1</sup>*Institute of High Energy Physics, Beijing 100049, People's Republic of China*

<sup>2</sup>*Beihang University, Beijing 100191, People's Republic of China*

<sup>3</sup>*Beijing Institute of Petrochemical Technology, Beijing 102617, People's Republic of China*

<sup>4</sup>*Bochum Ruhr-University, D-44780 Bochum, Germany*

<sup>5</sup>*Carnegie Mellon University, Pittsburgh, Pennsylvania 15213, USA*

<sup>6</sup>*Central China Normal University, Wuhan 430079, People's Republic of China*

<sup>7</sup>*China Center of Advanced Science and Technology, Beijing 100190, People's Republic of China*

<sup>8</sup>*COMSATS University Islamabad, Lahore Campus, Defence Road, Off Raiwind Road, 54000 Lahore, Pakistan*

<sup>9</sup>*Fudan University, Shanghai 200433, People's Republic of China*

<sup>10</sup>*G.I. Budker Institute of Nuclear Physics SB RAS (BINP), Novosibirsk 630090, Russia*

<sup>11</sup>*GSI Helmholtzcentre for Heavy Ion Research GmbH, D-64291 Darmstadt, Germany*

<sup>12</sup>*Guangxi Normal University, Guilin 541004, People's Republic of China*

<sup>13</sup>*Hangzhou Normal University, Hangzhou 310036, People's Republic of China*

<sup>14</sup>*Helmholtz Institute Mainz, Staudinger Weg 18, D-55099 Mainz, Germany*

<sup>15</sup>*Henan Normal University, Xixiang 453007, People's Republic of China*

<sup>16</sup>*Henan University of Science and Technology, Luoyang 471003, People's Republic of China*

<sup>17</sup>*Henan University of Technology, Zhengzhou 450001, People's Republic of China*

<sup>18</sup>*Huangshan College, Huangshan 245000, People's Republic of China*

<sup>19</sup>*Hunan Normal University, Changsha 410081, People's Republic of China*

<sup>20</sup>*Hunan University, Changsha 410082, People's Republic of China*

<sup>21</sup>*Indian Institute of Technology Madras, Chennai 600036, India*

<sup>22</sup>*Indiana University, Bloomington, Indiana 47405, USA*

<sup>23a</sup>*INFN Laboratori Nazionali di Frascati, I-00044 Frascati, Italy*

<sup>23b</sup>*INFN Sezione di Perugia, I-06100 Perugia, Italy*

<sup>23c</sup>*University of Perugia, I-06100 Perugia, Italy*

<sup>24a</sup>*INFN Sezione di Ferrara, I-44122 Ferrara, Italy*

<sup>24b</sup>*University of Ferrara, I-44122 Ferrara, Italy*

<sup>25</sup>*Institute of Modern Physics, Lanzhou 730000, People's Republic of China*

<sup>26</sup>*Institute of Physics and Technology, Peace Avenue 54B, Ulaanbaatar 13330, Mongolia*

<sup>27</sup>*Jilin University, Changchun 130012, People's Republic of China*

<sup>28</sup>*Johannes Gutenberg University of Mainz, Johann-Joachim-Becher-Weg 45, D-55099 Mainz, Germany*

<sup>29</sup>*Joint Institute for Nuclear Research, 141980 Dubna, Moscow region, Russia*

<sup>30</sup>*Justus-Liebig-Universitaet Giessen, II. Physikalisches Institut, Heinrich-Buff-Ring 16, D-35392 Giessen, Germany*

<sup>31</sup>*Lanzhou University, Lanzhou 730000, People's Republic of China*

<sup>32</sup>*Liaoning Normal University, Dalian 116029, People's Republic of China*

<sup>33</sup>*Liaoning University, Shenyang 110036, People's Republic of China*

<sup>34</sup>*Nanjing Normal University, Nanjing 210023, People's Republic of China*

<sup>35</sup>*Nanjing University, Nanjing 210093, People's Republic of China*

<sup>36</sup>*Nankai University, Tianjin 300071, People's Republic of China*

<sup>37</sup>*National Centre for Nuclear Research, Warsaw 02-093, Poland*

<sup>38</sup>*North China Electric Power University, Beijing 102206, People's Republic of China*

<sup>39</sup>*Peking University, Beijing 100871, People's Republic of China*

- <sup>40</sup>Qufu Normal University, Qufu 273165, People's Republic of China  
<sup>41</sup>Shandong Normal University, Jinan 250014, People's Republic of China  
<sup>42</sup>Shandong University, Jinan 250100, People's Republic of China  
<sup>43</sup>Shanghai Jiao Tong University, Shanghai 200240, People's Republic of China  
<sup>44</sup>Shanxi Normal University, Linfen 041004, People's Republic of China  
<sup>45</sup>Shanxi University, Taiyuan 030006, People's Republic of China  
<sup>46</sup>Sichuan University, Chengdu 610064, People's Republic of China  
<sup>47</sup>Soochow University, Suzhou 215006, People's Republic of China  
<sup>48</sup>South China Normal University, Guangzhou 510006, People's Republic of China  
<sup>49</sup>Southeast University, Nanjing 211100, People's Republic of China  
<sup>50</sup>State Key Laboratory of Particle Detection and Electronics, Beijing 100049, Hefei 230026, People's Republic of China  
<sup>51</sup>Sun Yat-Sen University, Guangzhou 510275, People's Republic of China  
<sup>52</sup>Suranaree University of Technology, University Avenue 111, Nakhon Ratchasima 30000, Thailand  
<sup>53</sup>Tsinghua University, Beijing 100084, People's Republic of China  
<sup>54a</sup>Turkish Accelerator Center Particle Factory Group, Istinye University, 34010 Istanbul, Turkey  
<sup>54b</sup>Near East University, Nicosia, North Cyprus, Mersin 10, Turkey  
<sup>55</sup>University of Chinese Academy of Sciences, Beijing 100049, People's Republic of China  
<sup>56</sup>University of Groningen, NL-9747 AA Groningen, Netherlands  
<sup>57</sup>University of Hawaii, Honolulu, Hawaii 96822, USA  
<sup>58</sup>University of Jinan, Jinan 250022, People's Republic of China  
<sup>59</sup>University of Manchester, Oxford Road, Manchester M13 9PL, United Kingdom  
<sup>60</sup>University of Minnesota, Minneapolis, Minnesota 55455, USA  
<sup>61</sup>University of Muenster, Wilhelm-Klemm-Straße 9, 48149 Muenster, Germany  
<sup>62</sup>University of Oxford, Keble Road, Oxford, United Kingdom OX13RH  
<sup>63</sup>University of Science and Technology Liaoning, Anshan 114051, People's Republic of China  
<sup>64</sup>University of Science and Technology of China, Hefei 230026, People's Republic of China  
<sup>65</sup>University of South China, Hengyang 421001, People's Republic of China  
<sup>66</sup>University of the Punjab, Lahore-54590, Pakistan  
<sup>67a</sup>University of Turin and INFN, University of Turin, I-10125 Turin, Italy  
<sup>67b</sup>University of Eastern Piedmont, I-15121 Alessandria, Italy  
<sup>67c</sup>INFN, I-10125 Turin, Italy  
<sup>68</sup>Uppsala University, Box 516, SE-75120 Uppsala, Sweden  
<sup>69</sup>Wuhan University, Wuhan 430072, People's Republic of China  
<sup>70</sup>Xinyang Normal University, Xinyang 464000, People's Republic of China  
<sup>71</sup>Yunnan University, Kunming 650500, People's Republic of China  
<sup>72</sup>Zhejiang University, Hangzhou 310027, People's Republic of China  
<sup>73</sup>Zhengzhou University, Zhengzhou 450001, People's Republic of China



(Received 17 June 2022; accepted 20 September 2022; published 10 October 2022)

<sup>a</sup>Also at the Moscow Institute of Physics and Technology, Moscow 141700, Russia.

<sup>b</sup>Also at the Novosibirsk State University, Novosibirsk 630090, Russia.

<sup>c</sup>Also at the NRC “Kurchatov Institute”, PNPI, 188300 Gatchina, Russia.

<sup>d</sup>Currently at Istanbul Arel University, 34295 Istanbul, Turkey.

<sup>e</sup>Also at Goethe University Frankfurt, 60323 Frankfurt am Main, Germany.

<sup>f</sup>Also at Key Laboratory for Particle Physics, Astrophysics and Cosmology, Ministry of Education; Shanghai Key Laboratory for Particle Physics and Cosmology; Institute of Nuclear and Particle Physics, Shanghai 200240, People's Republic of China.

<sup>g</sup>Also at Key Laboratory of Nuclear Physics and Ion-beam Application (MOE) and Institute of Modern Physics, Fudan University, Shanghai 200443, People's Republic of China.

<sup>h</sup>Also at State Key Laboratory of Nuclear Physics and Technology, Peking University, Beijing 100871, People's Republic of China.

<sup>i</sup>Also at School of Physics and Electronics, Hunan University, Changsha 410082, China.

<sup>j</sup>Also at Guangdong Provincial Key Laboratory of Nuclear Science, Institute of Quantum Matter, South China Normal University, Guangzhou 510006, China.

<sup>k</sup>Also at Frontiers Science Center for Rare Isotopes, Lanzhou University, Lanzhou 730000, People's Republic of China.

<sup>l</sup>Also at Lanzhou Center for Theoretical Physics, Lanzhou University, Lanzhou 730000, People's Republic of China.

<sup>m</sup>Also at the Department of Mathematical Sciences, IBA, Karachi, Pakistan.

Using about  $23 \text{ fb}^{-1}$  of data collected with the BESIII detector operating at the BEPCII storage ring, a precise measurement of the  $e^+e^- \rightarrow \pi^+\pi^-J/\psi$  Born cross section is performed at center-of-mass energies from 3.7730 to 4.7008 GeV. Two structures, identified as the  $Y(4220)$  and the  $Y(4320)$  states, are observed in the energy-dependent cross section with a significance larger than  $10\sigma$ . The masses and widths of the two structures are determined to be  $(M, \Gamma) = (4221.4 \pm 1.5 \pm 2.0 \text{ MeV}/c^2, 41.8 \pm 2.9 \pm 2.7 \text{ MeV})$  and  $(M, \Gamma) = (4298 \pm 12 \pm 26 \text{ MeV}/c^2, 127 \pm 17 \pm 10 \text{ MeV})$ , respectively. A small enhancement around 4.5 GeV with a significance about  $3\sigma$ , compatible with the  $\psi(4415)$ , might also indicate the presence of an additional resonance in the spectrum. The inclusion of this additional contribution in the fit to the cross section affects the resonance parameters of the  $Y(4320)$  state.

DOI: [10.1103/PhysRevD.106.072001](https://doi.org/10.1103/PhysRevD.106.072001)

## I. INTRODUCTION

A series of charmoniumlike states, commonly referred to as XYZ states, has been observed in the last two decades. The  $Y(4260)$  was first observed by *BABAR* using an initial state radiation (ISR) technique in the process  $e^+e^- \rightarrow \gamma_{\text{ISR}}\pi^+\pi^-J/\psi$  [1] and was soon confirmed by Belle in the same process [2]. In 2017, the BESIII collaboration was able to resolve the  $Y(4260)$  structure into a combination of two resonances, the  $Y(4220)$  and the  $Y(4320)$ , using the world's largest sample of  $e^+e^- \rightarrow \pi^+\pi^-J/\psi$  events [3]. Moreover, similar structures have been observed in the processes  $e^+e^- \rightarrow \pi^+\pi^-\psi(2S)$  [4],  $\pi^+\pi^-h_c$  [5],  $\pi^+D^0D^{*-}$  [6],  $\eta J/\psi$  [7] and  $\omega\chi_{cJ}$  ( $J = 0, 1, 2$ ) [8,9] with the BESIII data. The parameters of the two resonances are to a large extent consistent among reactions. However, to understand whether the structures observed in different final states are indeed the same, more investigations are needed.

Conventional charmonium states, such as the  $\psi(4040)$ ,  $\psi(4160)$ , and  $\psi(4415)$ , mainly decay into open charm final states ( $D^{(*)}\bar{D}^{(*)}$ ), while the  $Y$  states show strong coupling to the hidden-charm final states [10]. The number of observed vector states in this energy region exceeds that of the predicted vector charmonium states [11]. These features suggest that some of these supernumerary vector states are candidates of an exotic nature, such as hybrid, tetraquark states, or mesonic molecules [12–17]. To clarify the nature of these states and to distinguish between the different theoretical models, precise measurements of the production cross section and of the resonance parameters are essential.

In this paper, an improved measurement of the energy-dependent  $e^+e^- \rightarrow \pi^+\pi^-J/\psi$  cross section at center-of-mass energies ( $\sqrt{s}$ ) between 3.7730 to 4.7008 GeV with a total integrated luminosity of about  $23 \text{ fb}^{-1}$  is presented. The XYZ data and the  $R$ -scan data (between  $\sqrt{s} = 4.410$  and 4.590 GeV) analyzed in Ref. [3] are also analyzed here, and thus these measurements are correlated and should not be used in combination. Improvements in this paper include the use of additional data in the  $Y(4220)/Y(4320)$  mass region, allowing us to study these two states in more detail, as well as the inclusion of more detailed background studies and systematic studies of the event selection.

## II. THE BESIII DETECTOR AND DATASETS

The BESIII detector [18] records  $e^+e^-$  collisions provided by the BEPCII storage ring [19] in a center-of-mass energy range from 2.0 to 4.9 GeV. The cylindrical core of the detector covers 93% of the full solid angle and consists of a helium-based multilayer drift chamber (MDC), a plastic scintillator time-of-flight system (TOF), and a CsI(Tl) electromagnetic calorimeter (EMC), which are all enclosed in a superconducting solenoidal magnet providing a 1.0 T magnetic field. The solenoid is supported by an octagonal flux-return yoke with resistive plate counter muon identification modules interleaved with steel. The charged-particle momentum resolution at 1 GeV/ $c$  is 0.5%, and the  $dE/dx$  resolution is 6% for electrons from Bhabha scattering. The EMC measures photon energies with a resolution of 2.5% (5%) at 1 GeV in the barrel (end cap) region. The time resolution in the TOF barrel region is 68 ps, while that in the end cap region is 110 ps. The end cap TOF system was upgraded in 2015 using multigap resistive plate chamber technology, providing a time resolution of 60 ps [20].

The data samples analyzed in this article are listed in the Appendix. They include 40 energy points (referred to as the XYZ data sample) from 3.7730 to 4.7008 GeV with an integrated luminosity of more than  $40 \text{ pb}^{-1}$  at each  $\sqrt{s}$ , and 13 energy points (the  $R$ -scan data sample) from 4.410 to 4.590 GeV with a luminosity of 7–9  $\text{pb}^{-1}$  at each  $\sqrt{s}$  to study possible structure around 4.5 GeV. The integrated luminosities and  $\sqrt{s}$  are measured using Bhabha scattering, radiative dimuon events, and  $\Lambda_c$  pairs [21–23].

The GEANT4-based [24] Monte Carlo (MC) simulation software packages BOOST [25] and EVTGEN [26] are used to determine detection efficiencies and to estimate the background contributions. The generator KKMC [27] is used to model the beam energy spread and the ISR emission in  $e^+e^-$  annihilations. Final state radiation (FSR) from charged (final state) particles is incorporated using the PHOTOS package [28]. The signal MC samples of  $e^+e^- \rightarrow \pi^+\pi^-J/\psi$ , with  $J/\psi \rightarrow \ell^+\ell^-$  ( $\ell = e, \mu$ ), are generated using a phase-space (PHSP) model and weighted following the results of a partial wave analysis (PWA) of



the data. The amplitude model and the PWA framework are the same as in Refs. [29–31]. Potential background contaminations are studied via inclusive MC samples described in Refs. [3,32]. Bhabha, dimuon, and  $e^+e^- \rightarrow 2(\pi^+\pi^-)$  events are chosen as control samples to study the tracking efficiencies of  $e^\pm$ ,  $\mu^\pm$ , and  $\pi^\pm$ , respectively. An exclusive MC sample for  $e^+e^- \rightarrow e^+e^-\mu^+\mu^-$  (with  $\gamma^*\gamma^* \rightarrow \mu^+\mu^-$ , two-photon process) [33,34] is generated for boosted decision tree (BDT) training [35] used for background suppression.

### III. EVENT SELECTION

Events with exactly four charged tracks and zero net charge are selected. In order to be considered, a charged track reconstructed in the MDC is required to satisfy  $|\cos\theta| < 0.93$ , with  $\theta$  being the polar angle, and the distance of closest approach to the  $e^+e^-$  interaction point must be within  $\pm 10$  cm in the beam direction and within 1 cm in the plane perpendicular to the beam direction. If there are only two tracks with momentum greater than 1.0 GeV/c, then the two tracks are judged as leptons; if there are three tracks with momentum greater than 1.0 GeV/c, then the two tracks with opposite charges and with an invariant mass closer to the  $J/\psi$  mass [36] are regarded as leptons. The other two tracks are regarded as pions. The energy deposited in the EMC is used to distinguish between electrons and muons. For muon candidates, the deposited energy is required to be less than 0.4 GeV, while for electrons, it is required to be larger than 1.1 GeV. In order to suppress the background contribution and to improve the energy and momentum resolution, a four-constraint (4C) kinematic fit is applied to the event with the hypothesis  $e^+e^- \rightarrow \pi^+\pi^-\ell^+\ell^-$ , which constrains the total four-momentum of the final state particles to that

of the initial colliding beams. The  $\chi^2$  of the kinematic fit is required to be less than 60. The cosine of the opening angle of the pion-pair  $[\cos(\pi^+\pi^-)]$  and, only in the  $J/\psi \rightarrow e^+e^-$  decay channel, of the pion-electron pairs  $[\cos(\pi^\pm e^\mp)]$  are required to be less than 0.98 to suppress gamma conversion background events of the radiative Bhabha and dimuon background contributions [3].

In order to reduce the background contributions from low momentum electrons, pions are identified using the  $dE/dx$  information recorded by the MDC. A discriminator  $\chi_{\pi^{+/-}} \equiv (\mu_m - \mu_{\text{exp}})/\sigma_m$  is defined by combining the measured  $dE/dx$  value ( $\mu_m$ ), the measurement uncertainty ( $\sigma_m$ ), and the expected value under a pion hypothesis ( $\mu_{\text{exp}}$ ). The conditions  $\chi_{\pi^+} < 2.8(3.2)$  and  $\chi_{\pi^-} < 3.0(4.10)$  for the  $e^+e^-$  mode ( $\mu^+\mu^-$  mode) are found to provide an optimal balance between signal efficiency loss and background rejection power. The polar angle distributions of  $e^+$  and  $e^-$  in the  $J/\psi \rightarrow e^+e^-$  mode (Fig. 1) clearly show a significant contribution from the  $e^+e^- \rightarrow e^+e^-\mu^+\mu^-$  process (a two-photon process corresponding to the yellow filled area in Fig. 1). A boosted decision tree method, implemented within the TMVA framework [35], is trained to efficiently suppress this background.

The energy deposited in the EMC, the time of flight from TOF,  $dE/dx$ , and the opening angle of the pion and electron candidates (Fig. 2) are used as input variables to the BDT, as they are mostly uncorrelated, as can be seen from Figs. 3(a) and 3(b). The BDT is trained using the MC simulation of the process  $e^+e^- \rightarrow e^+e^-\mu^+\mu^-$ . The signal MC and background MC simulation of multiple energy points are combined to train the BDT model. Figure 3(c) shows that the training samples and test samples in the BDT model are in good agreement, and the model can effectively distinguish between signal and background. The response of the BDT is required to maximize the  $S/\sqrt{S+B}$

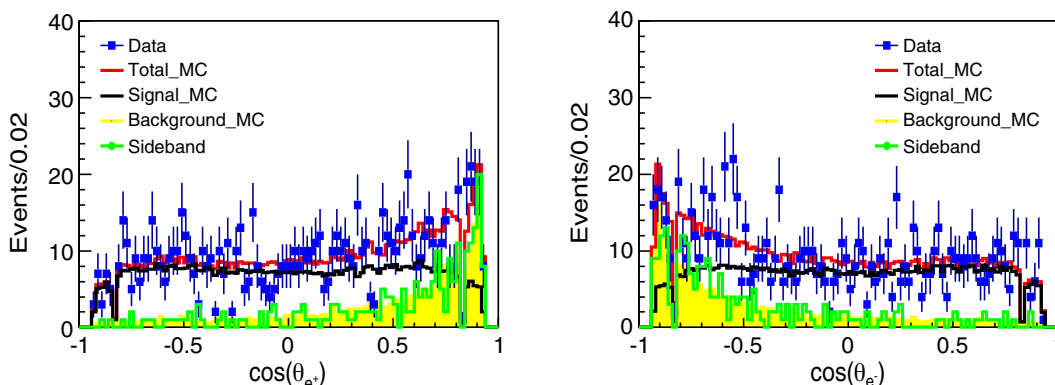


FIG. 1. Cosine of the polar angle of the  $e^+$  ( $\cos(\theta_{e^+})$ ) and  $e^-$  ( $\cos(\theta_{e^-})$ ) from the sample at  $\sqrt{s} = 4.1780$  GeV. The blue dots with error bars are data from the signal region ( $3.08 < M(\ell^+\ell^-) < 3.12$  GeV/c<sup>2</sup>). The black line is the signal MC, which is normalized to the number of signal events. The green line comes from the sideband region ( $3.02 < M(\ell^+\ell^-) < 3.06$  GeV/c<sup>2</sup> or  $3.14 < M(\ell^+\ell^-) < 3.18$  GeV/c<sup>2</sup>, with an event weight of 0.5) of  $M(\ell^+\ell^-)$ . The yellow-filled area is the background MC (two-photon process MC), and it is normalized to the number of events in the sideband area. The red line is the sum of signal MC plus background MC simulation.

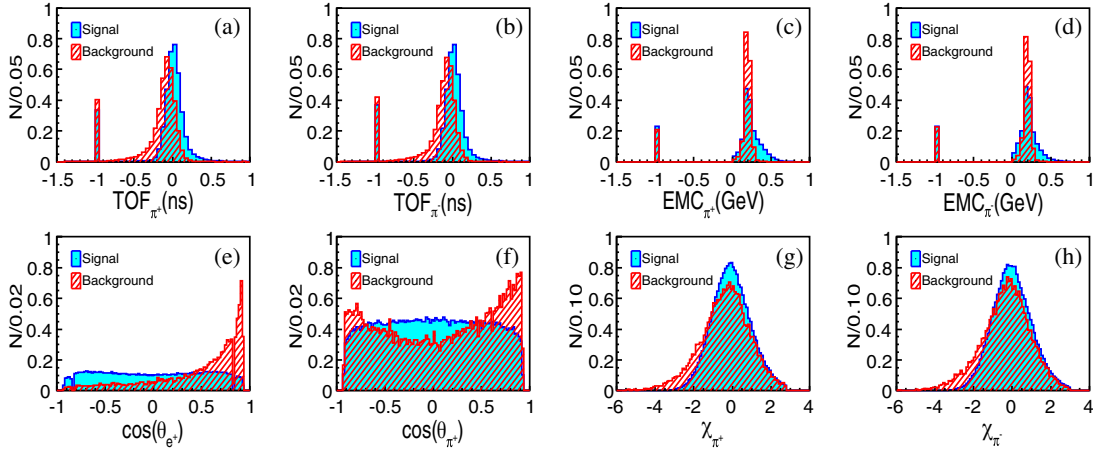


FIG. 2. The variables used in the BDT. (a, b) Distribution of the difference between the measured value and the expected value from the TOF of the two pions. (c, d) The energy deposited in the EMC by the two pions. (e, f) The cosine of the polar angle of  $e^+$  [ $\cos(\theta_{e^+})$ ] and  $\pi^+$  [ $\cos(\theta_{\pi^+})$ ]. (g, h) Distributions of  $\chi_{\pi^+}$  and  $\chi_{\pi^-}$ . The blue line is for the signal and the red line for the background. In (a, b, c, d), the peak at  $-1.0$  corresponds to the tracks without TOF or EMC information. The background and the signal have the same magnitude. All the distributions come from the signal MC and background MC simulation.

distribution (where the  $S$  and  $B$  indicate the number of signal and background events passing the condition) shown in Fig. 3(d).

#### IV. MEASUREMENT OF THE DRESSED BORN CROSS SECTION

After applying the event selection criteria mentioned above, a clear  $J/\psi$  signal peak is observed in the invariant mass distribution of the lepton pairs ( $M(\ell^+\ell^-)$ ), as shown in Fig. 4(a) ( $e^+e^-$  mode) and Fig. 4(b) ( $\mu^+\mu^-$  mode), Fig. 4(c) (data) and Fig. 4(d) (MC) show the two-dimensional distribution of the invariant mass of the  $\pi^+\pi^-$  and  $\pi^+J/\psi$  pairs. To determine the signal yields, an unbinned maximum-likelihood fit to  $M(\ell^+\ell^-)$  is performed. The signal probability density function (PDF) is defined as the convolution between the MC signal and a Gaussian function, while the background contribution is parametrized with a linear term.

The dressed Born cross section of  $e^+e^- \rightarrow \pi^+\pi^-J/\psi$  at a given  $\sqrt{s}$  is calculated with

$$\sigma(\sqrt{s}) = \frac{N^{\text{obs}}}{\mathcal{L}_{\text{int}}(1+\delta)\epsilon\mathcal{B}}, \quad (1)$$

where  $N^{\text{obs}}$  is the number of signal events,  $\mathcal{L}_{\text{int}}$  is the integrated luminosity,  $\epsilon$  is the selection efficiency,  $\mathcal{B}$  is the branching fraction of  $J/\psi \rightarrow \ell^+\ell^-$  [36] and  $(1+\delta)$  is the ISR correction factor. The final cross section is given by the average of the  $e^+e^-$  and the  $\mu^+\mu^-$  modes, weighted with the inverse of the respective statistical uncertainties. The parameters of Eq. (1) and the measured cross sections at the different  $\sqrt{s}$  are summarized in the Appendix.

The ISR correction factor is evaluated using an iterative procedure, in which the  $\sigma(\sqrt{s})$  is initially assumed to be

simply flat and iteratively recomputed until the difference between the final two iterations is less than 0.1%. The  $(i+1)$ th iteration  $(1+\delta)^{i+1}$  is given by [37]:

$$(1+\delta)^{i+1} = (1+\delta)^0 \sum_j^N W_j^i / N, \quad W_j^i = \frac{\sigma^i(m_j)}{\sigma^i(\sqrt{s})}, \quad (2)$$

where  $W_j^i$  is the weighting factor for the  $j$ th event. The ISR correction factor  $(1+\delta)^0$  corresponds to the 0th iteration, i.e. to an assumed flat shape of the cross section;  $\sigma^i$  is the line-shape given by the  $i$ th iteration and  $\sigma^0$  is calculated using the KKMC [27] program;  $m_j$  is the invariant mass of the final state of the event  $j$ ; and  $N$  is the total number of generated MC events. Considering that the sizes of the  $R$ -scan data samples are small, only the XYZ data samples are used in the iteration. The ISR correction factors for the  $R$ -scan data samples are calculated from the model describing the cross section in Sec. VI.

#### V. SYSTEMATIC UNCERTAINTIES OF THE CROSS SECTION MEASUREMENTS

The main contributions to the systematic uncertainty of the cross section measurement are related to the measurement of the luminosity, the MC model, the tracking efficiency, the ISR correction, the branching fractions of  $J/\psi$  decays, the kinematic fit, the fit to  $M(\ell^+\ell^-)$ , and the BDT method. The integrated luminosities of all datasets are measured using large angle Bhabha scattering events with an uncertainty of 0.66% [21]. The branching fraction of  $J/\psi \rightarrow \ell^+\ell^-$  is taken from PDG [36], and the uncertainties are 0.6% for each mode. The uncertainty related to the kinematic fit is estimated by adjusting the helix parameters

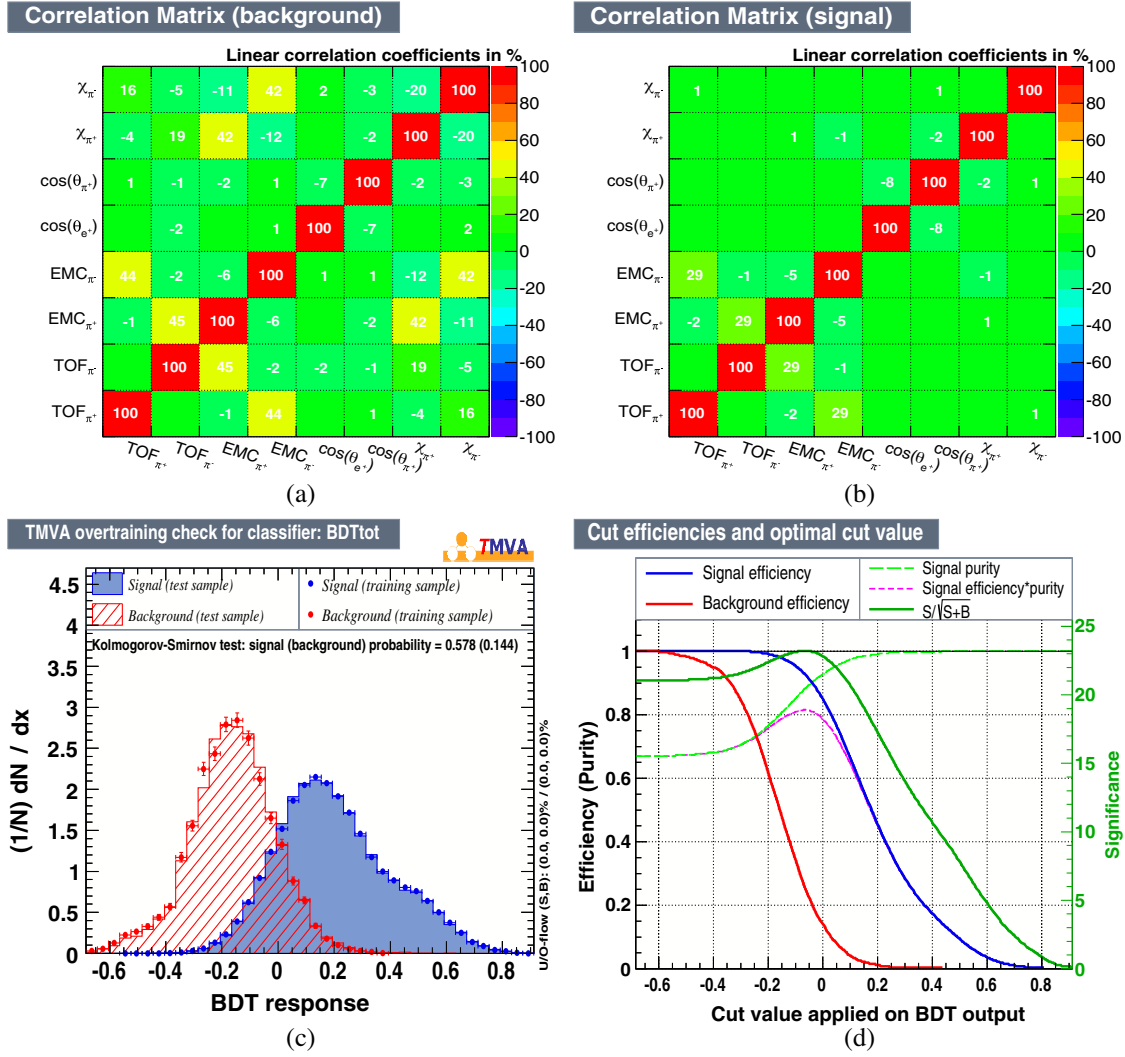


FIG. 3. (a,b) The linear correlation coefficients of the variables in the BDT training: (a) is for signal MC and (b) is for background MC simulation samples. (c) The overtraining check of the classifier: the training samples and test samples are in good agreement. (d) The optimized results of the sample at  $\sqrt{s} = 4.1780$  GeV. The numbers of signal and background events estimated from the data are used to maximize  $S/\sqrt{S+B}$  and thus optimize the event selection criteria.

of the charged tracks in MC simulation to match the  $\chi^2$  distribution of data and MC [38]. The uncertainty is determined as the difference between the results before and after the helix parameters correction, resulting in 0.76% (1.34%) for the  $\mu^+\mu^-$  ( $e^+e^-$ ) mode. The uncertainty on the signal yield arising from the fitting of the  $M(\ell^+\ell^-)$  distribution is obtained by varying the fit range and by changing the background modeling from a first to a second order polynomial, which leads to a difference of 2.44% (1.16%) that is taken as the systematic uncertainty introduced by the fit method.

In the evaluation of the systematic uncertainties due to the tracking efficiency, the MC simulation model, the BDT method, and the ISR correction, 300 sets of Gaussian samplings according to the related central value ( $\mu_0$ ) and statistical uncertainties, obtained from the control samples,

the PWA fitted parameters, the data-MC simulation ratios of the BDT training variables, and the ISR correction factors, are generated. A Gaussian function ( $\mu_1, \sigma_1$ ) is used to fit the resulting distributions from the 300 MC simulation samples. The final uncertainty of each source is given by  $(|\mu_1 - \mu_0| + \sigma_1)/\mu_0 \times 100\%$ .

The uncertainty of the tracking efficiency comes from the uncertainties of the correction factors obtained from control samples, which are the Bhabha, dimuon and  $e^+e^- \rightarrow 2(\pi^+\pi^-)$  processes. The correction factors are given by the ratio of data to MC simulation in the two dimensions of transverse momentum and the cosine of the polar angle. Therefore, the Gaussian sampling is based on the correction value and its uncertainty, and obtains the efficiencies distributions with respect to the new correction factors. In the MC simulation model, the uncertainties

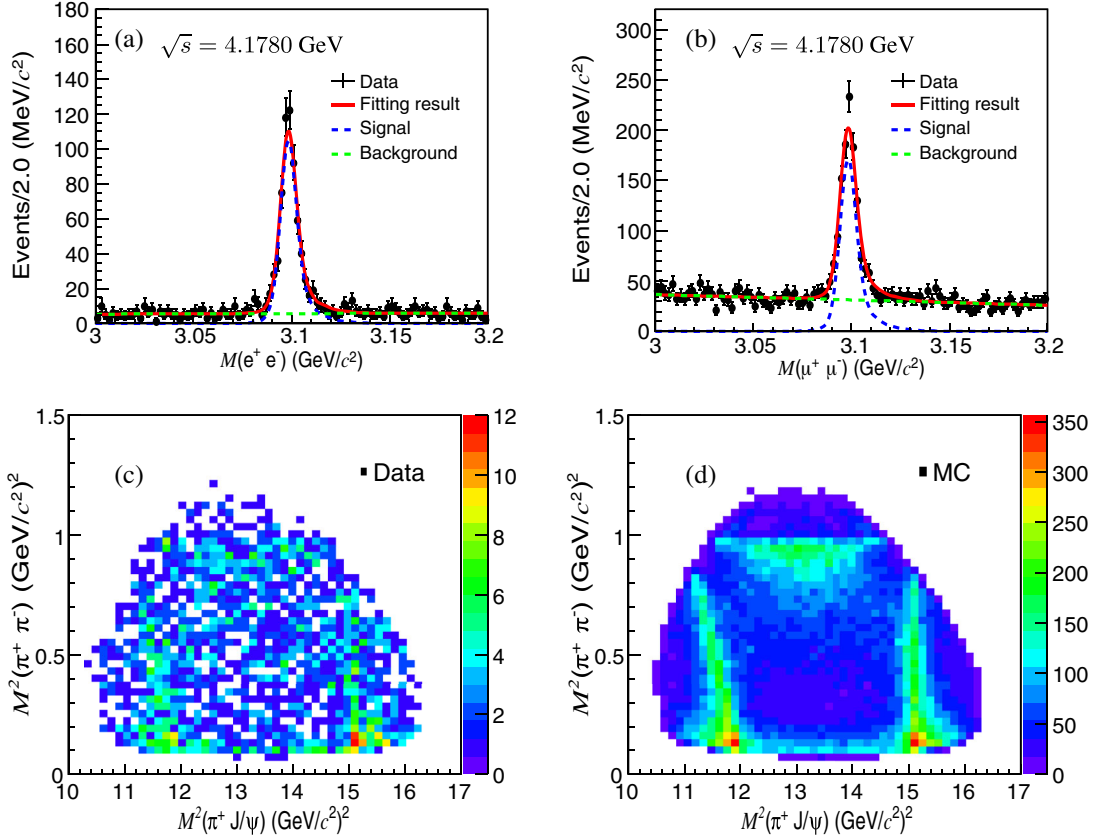


FIG. 4. The (a) and (b) plots show the fit results of the invariant mass of the  $e^+e^-$  mode and  $\mu^+\mu^-$  mode, respectively. The (c) and (d) are the two-dimensional distributions of the squared invariant mass of the  $\pi^+\pi^-$  and  $\pi^+J/\psi$  pairs. Here, (c) is the data, (d) is the MC simulation from PWA. The contents shown come from the sample at  $\sqrt{s} = 4.1780$  GeV.

come from the uncertainties of the amplitude parameters given by the PWA fit to the data. To estimate the uncertainties of the parameters, toy MC samples are generated according to the fitted parameters and the error matrix to obtain the efficiency distribution for each energy point. The difference in the efficiency determined with pseudoexperiments generated according to the amplitude model parameters with and without the three-body PHSP process is regarded as the uncertainty of the partial wave model.

The differences in line shape caused by statistical uncertainties lead to different ISR correction factors. Therefore, for each energy point, the cross section and error serve as the parameters of the Gaussian function of sampling, and after a new round of iteration, the cross section distribution is obtained for each point. Apart from the systematic uncertainty of the ISR correction, the systematic uncertainties of the other contributions are approximately the same for every energy point, and thus the average of each is taken, as listed in Table I. The ISR correction uncertainty of  $R$ -scan data samples are estimated by the value of closest  $XYZ$  data point, and the uncertainty of each point is listed in the Appendix. Assuming all the

sources to be independent, the total systematic uncertainties are obtained by adding them in quadrature.

## VI. FIT TO THE CROSS SECTION

To study the possible resonant structures in the  $e^+e^- \rightarrow \pi^+\pi^-J/\psi$  process, a maximum likelihood fit is performed to the measured cross section. The likelihood is constructed

TABLE I. Systematic uncertainties (%) of the cross section in  $\mu^+\mu^-$  mode and  $e^+e^-$  mode.

Source	Uncertainty (%)	
	$\mu^+\mu^-$	$e^+e^-$
Luminosities	0.7	0.7
Tracking efficiency	0.8	0.6
MC simulation model	1.9	1.9
Branching fractions	0.6	0.6
Kinematic fit	0.8	1.3
Fit to $M(\ell^+\ell^-)$	2.4	1.2
BDT method		0.9
Total	2.7	3.1



assuming the number of events satisfies a Gaussian distribution in XYZ data and Poisson distribution in R-scan data. The cross section is parametrized with a coherent sum of Breit-Wigner (BW) functions. Due to the lack of data near the  $\psi(3770)$  resonance, it is not feasible to determine the relative phase between the  $\psi(3770)$  amplitude and other amplitudes. The cross section line shape is described by

$$\sigma_{\text{fit}}(\sqrt{s}) = |R_{\psi(3770)}(\sqrt{s})|^2 + \left| \sum_{j=0}^n R_j(\sqrt{s}) e^{i\phi_j} \right|^2, \quad (3)$$

where  $R_{\psi(3770)}$  is used to describe the  $\psi(3770)$  resonance and its mass and width are fixed to the world average values [36]. The  $i$  is the imaginary unit.  $R_j$  represents the amplitude to describe a given resonant structure and  $\phi_j$  is the corresponding phase. The phase  $\phi_0$  is set to zero and the other phases are given relative to the  $R_0$ . For the structure near 4.0 GeV, two different parametrization methods are applied, Model I: a BW function, and Model II: an exponential function (Exp) of the form  $R_0(\sqrt{s}) = PS(\sqrt{s}) e^{-p_0(\sqrt{s}-M_{\text{threshold}})} p_1$  [39], with  $M_{\text{threshold}} = m_{\pi^+} + m_{\pi^-} + m_{J/\psi}$ ,  $PS(\sqrt{s})$  is the PHSP factor of the three-body decay  $R_j \rightarrow \pi^+ \pi^- J/\psi$  [36], and  $p_0$  and  $p_1$  are free parameters determined by the fit. The number of resonances is denoted by  $n$ , comprising the known  $Y(4220)$  and  $Y(4320)$  as well as further possible structures. The amplitude  $R_j$  is defined as

$$R_j(\sqrt{s}) = \frac{M_j \sqrt{12\pi\Gamma_j^{\text{ee}}\Gamma_j^{\text{tot}}\mathcal{B}(R_j)}}{\sqrt{s} s - M_j^2 + iM_j\Gamma_j^{\text{tot}}} \times \sqrt{\frac{PS(\sqrt{s})}{PS(M_j)}}, \quad (4)$$

where  $M_j$ ,  $\Gamma_j^{\text{tot}}$  and  $\Gamma_j^{\text{ee}}$  are the mass, full width and electronic width of resonance  $R_j$ , respectively, and  $\mathcal{B}(R_j)$  is the branching fraction for  $R_j \rightarrow \pi^+ \pi^- J/\psi$ .

In case of considering the states  $Y(4220)$  and  $Y(4320)$  ( $n = 2$ ), multiple sets of solutions are obtained given by the two models (Model I: BW, Model II: Exp) at 4.0 GeV. The fit results are shown in Fig. 5, and the fit parameters are summarized in Table II. Sizable differences between the fit results of Model I and Model II appear mainly in the energy region between 3.7730 and 4.1574 GeV. The difference of  $\chi^2/\text{nfd}$  is 3.72, where nfd is the number of degrees of freedom. Therefore, Model I is chosen to be the default model for the final cross section fit result. The cross section fit shows larger fluctuations at  $\sqrt{s} = 3.8713$  GeV. These might be due to the influence of the  $X(3872)$  [36] resonance which was not included in the model since the  $X(3872)$  is very narrow and there are not sufficient data points around its nominal mass.

Considering the distribution of the pull ( $\chi$ ) values, the above two models do not describe the interval from 4.4 to 4.6 GeV very well. Therefore, a third BW function ( $n = 3$ ) is added to study whether this deviation is caused by possible additional structures. When the (fit) parameters of the third BW function are floated, two possible solutions are obtained, one with a mass close to the  $\psi(4415)$  and the other one close to 4.5 GeV. Compared with the mode of  $n = 2$ , the significance of these two solutions are  $4.0\sigma$  ( $3.6\sigma$ ) and  $2.1\sigma$  ( $2.7\sigma$ ), respectively. The alternative fits using the parameters of the  $\psi(4415)$  [36] and the newly discovered  $Y(4500)$  structure [40] have also been attempted to describe the structure at 4.5 GeV, and led to results with significance of  $2.6\sigma$  ( $3.1\sigma$ ) and  $3.3\sigma$  ( $3.3\sigma$ ), respectively. The numbers in the brackets correspond to an alternative fit, in which the BW function (Model I) is

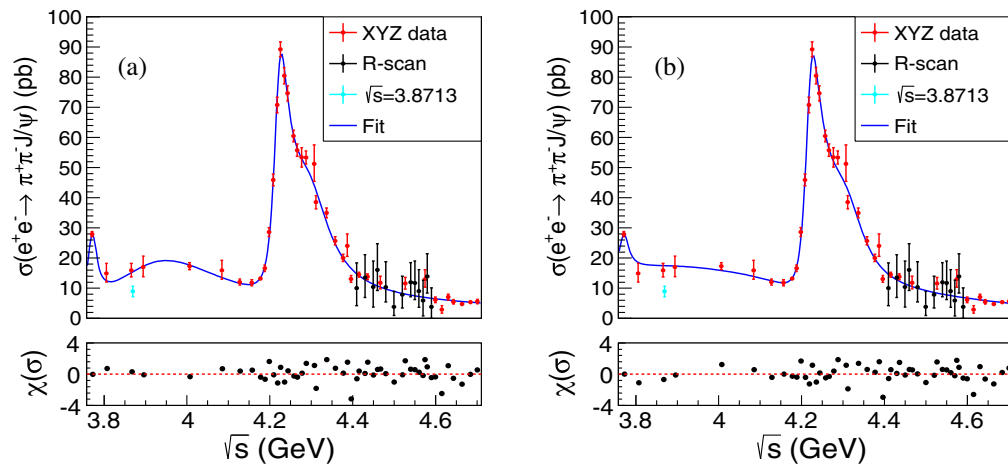


FIG. 5. Fit to the energy-dependent cross section of  $e^+e^- \rightarrow \pi^+\pi^-J/\psi$  using two different fit models: Model I (a) and Model II (b). The upper panels show the data points with error bars overlaid with the fit result represented by the solid (blue) line. The lower panels show the corresponding fit quality for each data point in terms of  $\chi$  in units of  $\sigma$ . The point of  $\sqrt{s} = 3.8713$  GeV is not included in the fit. For more details of the fit models, see the text.

TABLE II. The values of  $\Gamma^{e^+e^-} \mathcal{B}(R \rightarrow \pi^+\pi^-J/\psi)$  from the fit to the  $e^+e^- \rightarrow \pi^+\pi^-J/\psi$  cross section. The parameters  $M(R_n)$ ,  $\Gamma_n^{\text{tot}}(R_n)$  and  $\Gamma_n^{\text{ce}} \mathcal{B}(R_n)$ , ( $n = 0, 1, 2$ ) represent the mass (in MeV/ $c^2$ ), total width (in MeV) and the product of the  $e^+e^-$  partial width (in eV) with the branching ratio of the resonance decay into  $\pi^+\pi^-J/\psi$  for the resonances, respectively. Here,  $p_0$  ( $c^2/\text{MeV}$ ) and  $p_1$  are the free parameters of the exponential function. The parameters  $\phi_1$  and  $\phi_2$  (in degrees) are phases of the resonance  $R_1$  and  $R_2$ , the phase of resonance  $R_0$  is set to 0. The numbers in the brackets correspond to the fit by replacing the resonance  $R_0$  (BW: Model I) with an exponential function (Exp: Model II) to describe the structure near 4.0 GeV. The uncertainties are statistical only. “...” represents a null value.

Parameter	Solution I	Solution II	Solution III	Solution IV
$\Gamma_{3770}^{\text{ce}} \mathcal{B}(R_{3770})$		$0.6 \pm 0.1 (0.3 \pm 0.1)$		
$M(R_0)$ ( $p_0$ )		$3905.5 \pm 30.1 (4.4 \pm 0.3)$		
$\Gamma_0^{\text{tot}}(R_0)$ ( $p_1$ )		$346.0 \pm 48.5 ((2.7 \pm 0.6) \times 10^{-3})$		
$\Gamma_0^{\text{ce}} \mathcal{B}(R_0)$	$5.5 \pm 0.5 (...)$	$6.9 \pm 0.7 (...)$	$8.3 \pm 0.6 (...)$	$10.5 \pm 0.9 (...)$
$M(R_1)$		$4221.4 \pm 1.5 (4220.1 \pm 1.2)$		
$\Gamma_1^{\text{tot}}(R_1)$		$41.8 \pm 2.9 (43.6 \pm 2.6)$		
$\Gamma_1^{\text{ce}} \mathcal{B}(R_1)$	$1.7 \pm 0.2 (1.7 \pm 0.2)$	$8.2 \pm 0.9 (8.6 \pm 0.5)$	$3.0 \pm 0.5 (2.5 \pm 0.3)$	$14.6 \pm 1.2 (12.7 \pm 0.8)$
$M(R_2)$		$4297.5 \pm 12.1 (4316.2 \pm 12.4)$		
$\Gamma_2^{\text{tot}}(R_2)$		$126.6 \pm 16.7 (124.3 \pm 18.0)$		
$\Gamma_2^{\text{ce}} \mathcal{B}(R_2)$	$1.2 \pm 0.3 (0.7 \pm 0.2)$	$2.3 \pm 0.8 (1.1 \pm 0.3)$	$15.6 \pm 2.1 (15.0 \pm 1.2)$	$30.2 \pm 3.3 (23.6 \pm 2.9)$
$\phi_1$	$-3.7 \pm 5.4 (24.3 \pm 3.0)$	$-124.6 \pm 11.7 (-78.8 \pm 5.1)$	$87.7 \pm 21.9 (88.0 \pm 12.1)$	$-33.5 \pm 11.2 (-15.1 \pm 7.7)$
$\phi_2$	$79.6 \pm 18.5 (130.7 \pm 15.8)$	$35.8 \pm 27.2 (96.6 \pm 19.7)$	$-104.7 \pm 26.9 (-92.5 \pm 6.0)$	$-148.7 \pm 4.5 (-127.6 \pm 2.3)$
$\chi^2/\text{ndf}$		$54.0/40 (57.3/41)$		

replaced by an exponential function (Model II) to describe the structure near 4.0 GeV, as also shown in Tables II and III.

Due to the limited data samples around 4.4 GeV, the mass and width of the new additional BW function are fixed to  $\psi(4415)$  or  $Y(4500)$ , the fit result in Table III. With larger/new data samples in that region, the structure of the  $\psi(4415)$  or  $Y(4500)$  can be studied further. The fit results are shown in Fig. 6, and the parameters are summarized in Table III. In conclusion, the parameters of the  $Y(4220)$  state are stable for the different models, while the ones of

$Y(4360)$  heavily depend on the presence of an additional structure close to 4.5 GeV.

## VII. SYSTEMATIC UNCERTAINTIES OF THE RESONANCE PARAMETERS

Relevant systematic uncertainties of the fit parameters are caused by the fit model, the  $\sqrt{s}$  energy measurement and its spread, and the PHSP factor. The systematic uncertainty related to the fit model is evaluated as the difference of the mass and width results of Model I and

TABLE III. The fit results of the test for the additional structure near 4.5 GeV. The values of  $\Gamma^{e^+e^-} \mathcal{B}(R \rightarrow \pi^+\pi^-J/\psi)$  from the fit to the  $e^+e^- \rightarrow \pi^+\pi^-J/\psi$  cross section. The parameters  $M(R_n)$ , and  $\Gamma_n^{\text{tot}}(R_n)$  ( $n = 0, 1, 2, 3$ ) represent the mass (in MeV/ $c^2$ ), total width (in MeV) of the resonance decay into  $\pi^+\pi^-J/\psi$  for the resonances, respectively. Finally, the significance of the additional BW is given. The uncertainties are statistical only. The numbers in the brackets correspond to the fit by replacing the BW:Model I with an Exp: Model II to describe the structure near 4.0 GeV.

Parameter	Result I	Result II	Result III	Result IV
$M(R_1)$	$4221.0 \pm 1.6 (4220.3 \pm 1.6)$	$4219.8 \pm 1.3 (4219.1 \pm 1.2)$	$4223.9 \pm 1.4 (4219.6 \pm 1.3)$	$4220.2 \pm 1.3 (4219.4 \pm 1.1)$
$\Gamma_1^{\text{tot}}(R_1)$	$41.0 \pm 3.0 (42.3 \pm 3.0)$	$45.4 \pm 2.8 (46.3 \pm 2.5)$	$42.2 \pm 3.2 (44.3 \pm 2.7)$	$44.5 \pm 2.9 (45.3 \pm 2.5)$
$M(R_2)$	$4293.7 \pm 13.1$ $(4304.8 \pm 18.8)$	$4345.8 \pm 28.4$ $(4357.9 \pm 20.2)$	$4308.5 \pm 17.6$ $(4333.2 \pm 23.2)$	$4328.58 \pm 18.9$ $(4347.1 \pm 14.5)$
$\Gamma_2^{\text{tot}}(R_2)$	$152.4 \pm 23.9 (144.3 \pm 31.5)$	$130.1 \pm 20.7 (107.9 \pm 25.6)$	$161.4 \pm 24.6 (153.2 \pm 26.2)$	$133.8 \pm 20.2 (127.5 \pm 22.2)$
$M(R_3)$	$4405.6 \pm 4.5 (4405.0 \pm 6.7)$	$4471.1 \pm 36.2$ $(4550.9 \pm 16.9)$	$4421$ (fixed)	$4485$ (fixed)
$\Gamma_3^{\text{tot}}(R_3)$	$9.1 \pm 2.5 (8.7 \pm 4.9)$	$159.7 \pm 97.0 (211.8 \pm 132.8)$	$62$ (fixed)	$111$ (fixed)
$\chi^2/\text{ndf}$	$40.1/36 (44.8/37)$	$47.6/36 (48.7/37)$	$45.4/38 (48.7/39)$	$48.1/38 (51.3/39)$
Significance	$4.0\sigma (3.6\sigma)$	$2.1\sigma (2.7\sigma)$	$3.3\sigma (3.3\sigma)$	$2.6\sigma (3.1\sigma)$

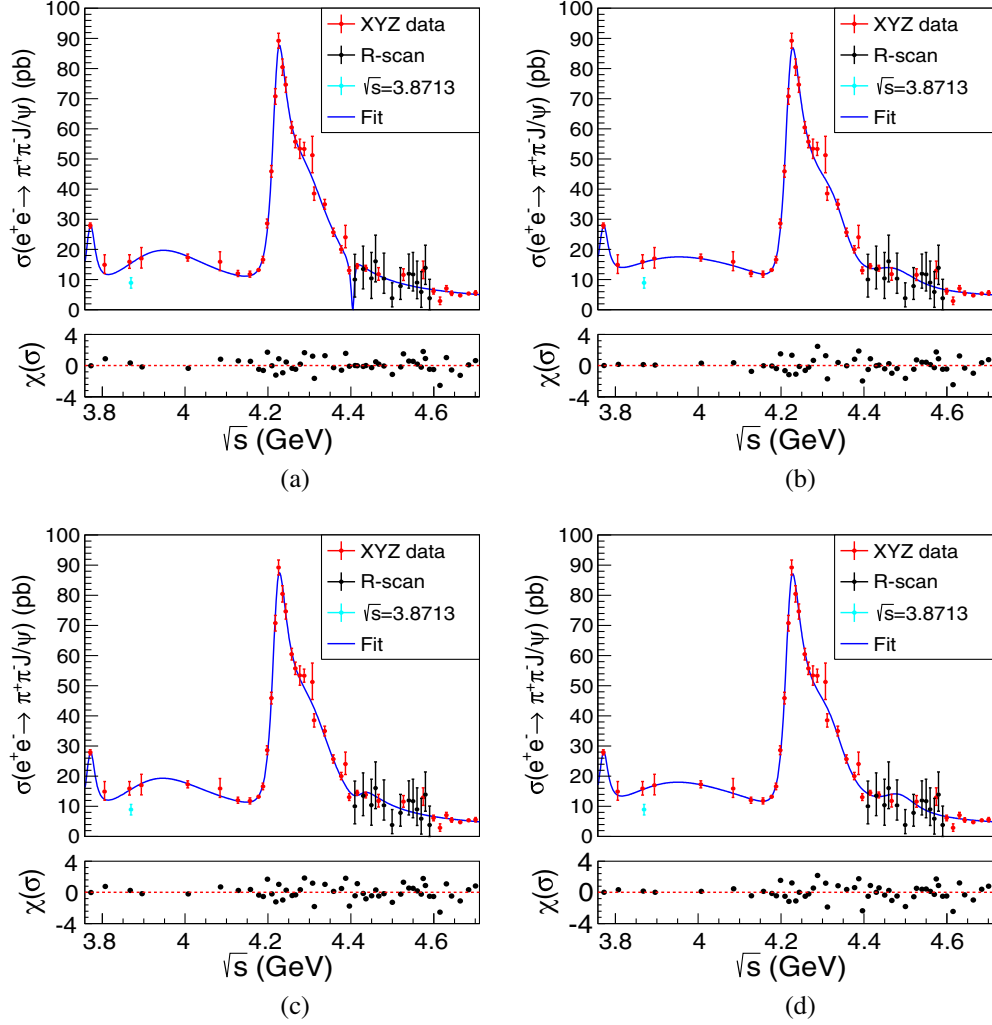


FIG. 6. Fit to the energy-dependent cross section of the process  $e^+e^- \rightarrow \pi^+\pi^-J/\psi$ , where an additional BW function is added based on Model I. The upper panels show the data points with error bars overlaid with the fit result represented by the solid (blue) line. The lower panels show the corresponding fit quality for each data point in terms of  $\chi$  in units of  $\sigma$ , and the fit results are listed in Table III. (a) and (b): The new BW function with free parameters. (c) and (d): The new BW function with parameters fixed to the  $\psi(4415)$  and  $Y(4500)$  resonance parameters. The point of  $\sqrt{s} = 3.8713$  GeV is not included in the fit.

Model II. The  $\sqrt{s}$  of all datasets have been measured with dimuon events with an uncertainty of 0.6 MeV that propagates directly to the uncertainty of the mass of the resonances. The uncertainties included by the  $\sqrt{s}$  spread are obtained by convolving the resonant PDF with a Gaussian function whose width is taken to be 1.6 MeV, equal to the spread obtained from the Beam Energy Measurement System [41]. The uncertainty of the PHSP factor, due to the existence of intermediate states, is estimated by considering the PHSP of cascade two-body decays of  $e^+e^- \rightarrow RJ/\psi$  [with  $R = \sigma, f_0(980), f_0(1370)$ ] and  $e^+e^- \rightarrow \pi^\pm Z_c(3900)^\mp$ , and the maximum value of the difference with respect to the result obtained when using the three-body PHSP factor is taken as the systematic uncertainty. The deviation of the resonant parameters introduced by the uncertainties of the  $\psi(3770)$  resonance parameters are less than

0.1 MeV, and thus can be neglected. Assuming all of the systematic uncertainties are independent, adding them in quadrature delivers the total error as listed in Table IV.

TABLE IV. Summary of the uncertainties of the resonance parameters.

Source	Uncertainty			
	Y(4220)		Y(4320)	
	M (MeV/ $c^2$ )	$\Gamma$ (MeV)	M (MeV/ $c^2$ )	$\Gamma$ (MeV)
$\sqrt{s}$	0.6		0.6	
Beam spread	0.3	0.4	5.0	2.1
Fit model	1.4	1.0	15.8	6.8
PHSP factor	1.3	2.5	19.9	7.8
Total	2.0	2.7	25.9	10.3

### VIII. SUMMARY

In summary, a precision measurement of the energy-dependent cross section for the process  $e^+e^- \rightarrow \pi^+\pi^-J/\psi$  from  $\sqrt{s} = 3.7730$  GeV to  $\sqrt{s} = 4.7008$  GeV at BESIII is performed. This measurement improves upon the precision of the previous results from the BESIII collaboration in the same channel [3] by about 60% at the points of same statistics ( $\sqrt{s} = 4.2263$  and  $4.2580$  GeV). This is achieved by the improvements in the optimized MC simulation model and the enhanced tracking efficiencies.

The energy-dependent cross section is fitted with different fit models for the cross section line shape, allowing for the search of resonances and the evaluation of their parameters. It was found that the structure close to 4.0 GeV is better described when using the Breit-Wigner function as compared to an exponential function. The  $Y(4220)$  and  $Y(4320)$  resonances were observed with significances larger than  $10\sigma$  and their resonance parameters were estimated to be consistent with those reported in Ref. [3]. However, the presence of an additional structure around 4.5 GeV, possibly identifiable with the  $\psi(4415)$ , influences the evaluation of the  $Y(4320)$  parameters, which are  $(M, \Gamma) = (4298 \pm 12 \pm 26 \text{ MeV}/c^2, 127 \pm 17 \pm 10 \text{ MeV})$ , therefore, reported with a large uncertainty.

### ACKNOWLEDGMENTS

The BESIII collaboration thanks the staff of BEPCII and the IHEP computing center for their strong support. This work is supported in part by National Key R&D Program of China under Contracts Nos. 2020YFA0406300, No. 2020YFA0406400; National Natural Science Foundation of China (NSFC) under Contracts No. 11625523, No. 11635010, No. 11735014,

No. 11822506, No. 11835012, No. 11935015, No. 11975141, No. 11935016, No. 11935018, No. 11961141012, No. 12022510, No. 12025502, No. 12035009, No. 12035013, No. 12061131003, No. 11875262; the Chinese Academy of Sciences (CAS) Large-Scale Scientific Facility Program; Joint Large-Scale Scientific Facility Funds of the NSFC and CAS under Contracts No. U1732263, No. U1832207; CAS Key Research Program of Frontier Sciences under Contract No. QYZDJ-SSW-SLH040; 100 Talents Program of CAS; INPAC and Shanghai Key Laboratory for Particle Physics and Cosmology; ERC under Contract No. 758462; European Union Horizon 2020 research and innovation programme under Contract No. Marie Skłodowska-Curie grant agreement No 894790; The Fundamental Research Funds of Shandong University; German Research Foundation DFG under Contracts Nos. 443159800, Collaborative Research Center CRC 1044, FOR 2359, GRK 2149; Istituto Nazionale di Fisica Nucleare, Italy; Ministry of Development of Turkey under Contract No. DPT2006K-120470; National Science and Technology fund; Olle Engkvist Foundation under Contract No. 200-0605; STFC (United Kingdom); The Knut and Alice Wallenberg Foundation (Sweden) under Contract No. 2016.0157; The Royal Society, UK under Contracts No. DH140054, No. DH160214; The Swedish Research Council; U. S. Department of Energy under Contracts No. DE-FG02-05ER41374, No. DE-SC-0012069.

### APPENDIX

Table V lists the parameters used to calculate the cross section of the  $e^+e^- \rightarrow \pi^+\pi^-J/\psi$  process with Eq. (1).



TABLE V. The cross section of  $e^+e^- \rightarrow \pi^+\pi^-J/\psi$ . Here,  $\mathcal{L}$  (pb $^{-1}$ ) is the integrated luminosity,  $1 + \delta$  is the radiation correction factor, “Rsys” is the systematic uncertainties (%) of the radiation correction factor,  $N^{\text{obs}}$  is the number of observed signal events from  $\ell^+\ell^-$  invariant mass distributions,  $\epsilon$  is the event selection efficiency determined from signal MC,  $\sigma$  (pb) is the cross section. “average” is the weighted average cross section of  $e^+e^-$  and  $\mu^+\mu^-$  modes, and the weight is the inverse of the statistical uncertainty. Samples marked with “ $\mu^-$ ” are  $R$ -scan data, and the results are given by combined  $e^+e^-$  mode and  $\mu^+\mu^-$  mode. The first term is statistical uncertainty, and the second term is systematic uncertainty. The uncertainty of  $\mathcal{L}$  consists of statistical and systematic uncertainties. The uncertainty for  $N^{\text{obs}}$  is statistical only.

$\sqrt{s}$ (GeV)	$\mathcal{L}$ (pb $^{-1}$ )	$1 + \delta$	Rsys (%)	$N^{\text{obs}}$		$\epsilon$ (%)		$\sigma$ (pb)		Average
				$e^+e^-$	$\mu^+\mu^-$	$e^+e^-$	$\mu^+\mu^-$	$e^+e^-$	$\mu^+\mu^-$	
3.7730	2874.72 ± 19.40	0.73	2.04	1169 ± 36	1756 ± 46	32.41	51.34	28.74 ± 0.89 ± 1.06	27.30 ± 0.72 ± 0.92	27.94 ± 0.56 ± 0.69
3.8077	50.54 ± 0.49	0.86	10.46	12 ± 4	17 ± 5	29.60	46.21	15.67 ± 5.22 ± 1.71	14.26 ± 4.19 ± 1.54	14.89 ± 3.29 ± 1.14
3.8674	108.90 ± 0.72	0.86	2.30	24 ± 5	40 ± 8	27.09	44.39	15.77 ± 3.28 ± 0.61	16.05 ± 3.21 ± 0.57	15.91 ± 2.30 ± 0.41
3.8713	110.30 ± 0.73	1.19	14.29	17 ± 5	30 ± 6	24.96	41.99	8.67 ± 2.55 ± 1.27	9.10 ± 1.82 ± 1.32	8.92 ± 1.50 ± 0.93
3.8962	52.61 ± 0.51	0.86	5.00	14 ± 4	19 ± 5	27.39	45.41	18.93 ± 5.41 ± 1.11	15.52 ± 4.08 ± 0.88	16.98 ± 3.29 ± 0.69
4.0076	482.00 ± 3.18	0.90	1.15	120 ± 12	229 ± 18	29.63	46.71	15.62 ± 1.56 ± 0.51	18.94 ± 1.49 ± 0.55	17.32 ± 1.08 ± 0.38
4.0855	52.86 ± 0.35	0.92	3.28	15 ± 4	20 ± 5	29.65	47.00	17.43 ± 4.65 ± 0.78	14.68 ± 3.67 ± 0.62	15.89 ± 2.90 ± 0.49
4.1271	397.99 ± 2.63	0.97	3.19	86 ± 10	127 ± 14	29.66	47.37	12.52 ± 1.46 ± 0.55	11.60 ± 1.28 ± 0.48	12.03 ± 0.96 ± 0.36
4.1567	409.88 ± 2.70	0.96	2.15	83 ± 10	118 ± 13	28.08	44.98	12.61 ± 1.52 ± 0.47	11.21 ± 1.24 ± 0.38	11.84 ± 0.96 ± 0.30
4.1780	3194.50 ± 31.90	0.94	2.61	612 ± 27	1032 ± 38	26.48	42.84	12.87 ± 0.57 ± 0.52	13.44 ± 0.49 ± 0.50	13.17 ± 0.37 ± 0.36
4.1888	570.05 ± 2.16	0.90	2.83	150 ± 13	231 ± 19	28.85	46.23	16.94 ± 1.47 ± 0.71	16.31 ± 1.34 ± 0.64	16.61 ± 0.99 ± 0.47
4.1989	524.60 ± 2.05	0.81	2.49	242 ± 17	354 ± 21	31.93	50.14	29.72 ± 2.09 ± 1.17	27.77 ± 1.65 ± 1.02	28.63 ± 1.30 ± 0.77
4.2091	572.05 ± 1.81	0.79	2.26	389 ± 21	634 ± 27	32.24	49.92	44.56 ± 2.41 ± 1.70	47.07 ± 2.00 ± 1.65	45.93 ± 1.55 ± 1.19
4.2187	569.20 ± 1.80	0.77	1.94	627 ± 26	915 ± 32	32.95	50.88	72.90 ± 3.02 ± 2.65	69.06 ± 2.42 ± 2.29	70.77 ± 1.90 ± 1.73
4.2263	1100.91 ± 7.00	0.76	1.15	1517 ± 40	2315 ± 51	34.37	52.00	88.68 ± 2.34 ± 2.88	89.81 ± 1.98 ± 2.59	89.29 ± 1.52 ± 1.93
4.2357	530.60 ± 2.39	0.82	1.54	696 ± 27	1103 ± 35	34.05	51.69	78.50 ± 3.05 ± 2.70	82.20 ± 2.61 ± 2.55	80.50 ± 1.99 ± 1.85
4.2438	593.98 ± 2.69	0.84	1.42	744 ± 28	1133 ± 36	33.22	51.12	74.99 ± 2.82 ± 2.54	74.37 ± 2.36 ± 2.26	74.65 ± 1.82 ± 1.69
4.2580	828.40 ± 5.47	0.89	1.15	888 ± 31	1327 ± 39	32.77	50.17	61.25 ± 2.14 ± 2.01	59.89 ± 1.76 ± 1.75	60.50 ± 1.37 ± 1.32
4.2667	529.70 ± 3.13	0.91	1.43	509 ± 23	781 ± 30	31.73	49.14	56.03 ± 2.53 ± 1.90	55.56 ± 2.13 ± 1.69	55.78 ± 1.64 ± 1.26
4.2776	175.70 ± 0.96	0.91	2.87	152 ± 13	253 ± 17	31.01	48.02	51.29 ± 4.39 ± 2.16	55.20 ± 3.71 ± 2.17	53.41 ± 2.84 ± 1.54
4.2866	498.52 ± 3.29	0.90	2.32	451 ± 22	684 ± 28	31.34	47.82	53.53 ± 2.61 ± 2.06	53.27 ± 2.18 ± 1.89	53.40 ± 1.68 ± 1.39
4.3079	45.08 ± 0.30	0.87	4.04	35 ± 6	59 ± 9	30.94	47.07	48.41 ± 8.30 ± 2.46	53.74 ± 7.29 ± 2.61	51.25 ± 5.49 ± 1.79
4.3115	499.19 ± 3.30	1.05	5.74	345 ± 19	573 ± 26	29.99	45.90	36.85 ± 2.03 ± 2.40	40.03 ± 1.82 ± 2.54	38.53 ± 1.36 ± 1.75
4.3370	511.48 ± 3.38	0.98	1.86	313 ± 19	453 ± 24	28.85	44.30	36.08 ± 2.19 ± 1.30	34.06 ± 1.80 ± 1.11	34.97 ± 1.40 ± 0.85
4.3583	543.94 ± 3.59	1.06	2.98	267 ± 17	342 ± 21	27.01	42.17	28.55 ± 1.82 ± 1.22	23.47 ± 1.44 ± 0.94	25.72 ± 1.14 ± 0.75
4.3768	531.41 ± 3.51	1.14	3.41	195 ± 15	297 ± 20	26.46	41.38	20.32 ± 1.56 ± 0.93	19.83 ± 1.34 ± 0.86	20.06 ± 1.02 ± 0.63
4.3874	55.57 ± 0.37	0.98	4.93	22 ± 5	32 ± 6	27.14	41.77	24.82 ± 5.64 ± 1.44	23.51 ± 4.41 ± 1.32	24.09 ± 3.50 ± 0.97
4.3954	515.95 ± 3.41	1.38	7.05	140 ± 13	194 ± 17	23.54	37.26	14.02 ± 1.30 ± 1.08	12.29 ± 1.08 ± 0.93	13.07 ± 0.83 ± 0.70
4.410 <sup>r</sup>	7.19 ± 0.01	1.14	7.05	3.3 <sup>+2.6</sup> <sub>-1.8</sub>	3.3 <sup>+2.6</sup> <sub>-1.8</sub>	31.75				10.00 <sup>+8.39</sup> <sub>-5.81</sub> ± 0.82
4.4156	1090.66 ± 6.89	1.17	2.68	233 ± 16	401 ± 24	22.19	34.64	13.76 ± 0.94 ± 0.56	15.18 ± 0.91 ± 0.57	14.49 ± 0.66 ± 0.40
4.430 <sup>r</sup>	6.96 ± 0.01	1.17	2.83	4.0 <sup>+2.2</sup> <sub>-1.9</sub>	4.0 <sup>+2.2</sup> <sub>-1.9</sub>	29.82				13.50 <sup>+7.62</sup> <sub>-6.58</sub> ± 0.54
4.4359	582.34 ± 3.84	1.16	2.83	110 ± 12	219 ± 18	22.23	35.27	12.17 ± 1.33 ± 0.51	15.36 ± 1.26 ± 0.60	13.81 ± 0.92 ± 0.39
4.450 <sup>r</sup>	7.86 ± 0.01	1.19	2.83	3.4 <sup>+2.6</sup> <sub>-1.9</sub>	3.4 <sup>+2.6</sup> <sub>-1.9</sub>	29.32				10.42 <sup>+7.97</sup> <sub>-5.82</sub> ± 0.41
4.460 <sup>r</sup>	8.96 ± 0.01	1.19	10.22	6.0 <sup>+3.1</sup> <sub>-2.4</sub>	6.0 <sup>+3.1</sup> <sub>-2.4</sub>	29.14				16.11 <sup>+8.32</sup> <sub>-6.44</sub> ± 1.70

(Table continued)

TABLE V. (Continued)

$\sqrt{s}$ (GeV)	$\mathcal{L}$ (pb $^{-1}$ )	$1 + \delta$	Rsys (%)	N <sup>obs</sup>		$\epsilon$ (%)		$\sigma$ (pb)		
				$e^+e^-$	$\mu^+\mu^-$	$e^+e^-$	$\mu^+\mu^-$	$e^+e^-$	$\mu^+\mu^-$	Average
4.4671	111.09 ± 0.73	1.17	10.22	25 ± 6	26 ± 7	22.05	35.61	15.10 ± 3.48 ± 1.61	9.38 ± 2.52 ± 0.99	11.78 ± 2.07 ± 0.89
4.480 <sup>r</sup>	8.39 ± 0.01	1.20	10.22		2.6 $^{+29}_{-16}$	28.97				10.30 $^{+8.30}_{-4.58}$ ± 0.79
4.500 <sup>r</sup>	8.24 ± 0.01	1.22	10.22		0.4 $^{+17}_{-09}$	28.40				3.82 $^{+4.99}_{-2.64}$ ± 0.12
4.520 <sup>r</sup>	8.95 ± 0.01	1.22	10.22		2.8 $^{+22}_{-15}$	28.37				7.82 $^{+5.93}_{-4.04}$ ± 0.80
4.5271	112.12 ± 0.74	1.12	2.84	25 ± 6	27 ± 6	23.59	38.18	14.08 ± 3.38 ± 0.59	9.76 ± 2.44 ± 0.38	11.57 ± 2.00 ± 0.33
4.540 <sup>r</sup>	9.66 ± 0.01	1.23	2.84		1.5 $^{+26}_{-19}$	28.20				11.98 $^{+6.49}_{-4.74}$ ± 0.15
4.550 <sup>r</sup>	9.05 ± 0.01	1.23	2.84		3.5 $^{+26}_{-19}$	28.13				11.74 $^{+6.93}_{-5.07}$ ± 0.36
4.560 <sup>r</sup>	8.59 ± 0.01	1.24	2.84		2.6 $^{+24}_{-17}$	28.01				8.99 $^{+6.74}_{-4.78}$ ± 0.28
4.570 <sup>r</sup>	8.69 ± 0.01	1.24	2.84		1.9 $^{+22}_{-15}$	28.71				5.93 $^{+5.93}_{-4.05}$ ± 0.20
4.5745	48.93 ± 0.32	1.06	3.93	7 ± 3	21 ± 5	23.50	39.88	9.63 ± 4.13 ± 0.48	16.21 ± 4.05 ± 0.77	12.95 ± 2.89 ± 0.45
4.580 <sup>r</sup>	8.84 ± 0.01	1.25	12.26		3.9 $^{+28}_{-20}$	28.51				13.87 $^{+7.47}_{-5.34}$ ± 1.31
4.590 <sup>r</sup>	8.50 ± 0.01	1.25	12.26		0.9 $^{+1.8}_{-1.1}$	28.67				3.86 $^{+4.96}_{-3.03}$ ± 0.31
4.5995	586.89 ± 3.87	1.49	12.26	64 ± 9	99 ± 14	19.37	31.79	6.35 ± 0.89 ± 0.80	5.98 ± 0.85 ± 0.75	6.16 ± 0.61 ± 0.55
4.6119	103.83 ± 0.68	2.35	55.62	7 ± 3	5 ± 4	14.22	23.18	3.86 ± 1.89 ± 2.18	1.80 ± 1.50 ± 1.00	2.72 ± 1.20 ± 1.13
4.6280	521.52 ± 3.37	1.22	7.34	43 ± 8	91 ± 13	18.55	31.20	6.09 ± 1.13 ± 0.49	7.68 ± 1.10 ± 0.61	6.90 ± 0.80 ± 0.39
4.6409	552.41 ± 3.57	1.43	8.72	54 ± 8	75 ± 12	19.77	32.22	5.79 ± 0.86 ± 0.54	4.95 ± 0.79 ± 0.46	5.35 ± 0.59 ± 0.35
4.6612	529.63 ± 3.45	1.48	3.75	42 ± 7	69 ± 12	18.87	31.09	4.73 ± 0.79 ± 0.23	4.74 ± 0.82 ± 0.22	4.73 ± 0.58 ± 0.16
4.6819	1669.31 ± 10.77	1.35	2.59	134 ± 14	210 ± 20	18.41	30.66	5.40 ± 0.56 ± 0.22	5.10 ± 0.49 ± 0.19	5.24 ± 0.38 ± 0.15
4.6988	536.20 ± 3.47	1.33	3.97	46 ± 8	72 ± 12	18.65	31.97	5.77 ± 1.00 ± 0.29	5.22 ± 0.88 ± 0.25	5.48 ± 0.68 ± 0.19

- [1] B. Aubert *et al.* (BABAR Collaboration), *Phys. Rev. Lett.* **95**, 142001 (2005).
- [2] C. Z. Yuan *et al.* (Belle Collaboration), *Phys. Rev. Lett.* **99**, 182004 (2007).
- [3] M. Ablikim *et al.* (BESIII Collaboration), *Phys. Rev. Lett.* **118**, 092001 (2017).
- [4] M. Ablikim *et al.* (BESIII Collaboration), *Phys. Rev. D* **96**, 032004 (2017).
- [5] M. Ablikim *et al.* (BESIII Collaboration), *Phys. Rev. Lett.* **118**, 092002 (2017).
- [6] M. Ablikim *et al.* (BESIII Collaboration), *Phys. Rev. Lett.* **122**, 102002 (2019).
- [7] M. Ablikim *et al.* (BESIII Collaboration), *Phys. Rev. D* **102**, 031101 (2020).
- [8] M. Ablikim *et al.* (BESIII Collaboration), *Phys. Rev. Lett.* **114**, 092003 (2015).
- [9] M. Ablikim *et al.* (BESIII Collaboration), *Phys. Rev. D* **93**, 011102 (2016).
- [10] X. H. Mo, G. Li, C. Z. Yuan, K. L. He, H. M. Hu, J. H. Hu, P. Wang, and Z. Y. Wang, *Phys. Lett. B* **640**, 182 (2006).
- [11] E. Eichten, K. Gottfried, T. Kinoshita, K. D. Lane, and T.-M. Yan, *Phys. Rev. D* **17**, 3090 (1978); **21**, 203 (1980); S. Godfrey and N. Isgur, *Phys. Rev. D* **32**, 189 (1985).
- [12] M. Berwein, N. Brambilla, J. Tarrús Castellà, and A. Vairo, *Phys. Rev. D* **92**, 114019 (2015).
- [13] E. Epelbaum, A. M. Gasparyan, H. Krebs, and C. Schat, *Eur. Phys. J. A* **51**, 26 (2015).
- [14] F. K. Guo, C. Hanhart, U. G. Meißner, Q. Wang, and Q. Zhao, *Phys. Lett. B* **725**, 127 (2013).
- [15] M. Cleven, Q. Wang, F.-K. Guo, C. Hanhart, U.-G. Meißner, and Q. Zhao, *Phys. Rev. D* **90**, 074039 (2014).
- [16] C. Ayala, G. Cvetič, A. V. Kotikov, and B. G. Shaikhmatdenov, *Eur. Phys. J. C* **78**, 1002 (2018).
- [17] J. F. Giron and R. F. Lebed, *Phys. Rev. D* **101**, 074032 (2020).
- [18] M. Ablikim *et al.* (BESIII Collaboration), *Nucl. Instrum. Methods Phys. Res., Sect. A* **614**, 345 (2010).
- [19] C. H. Yu *et al.*, *Proceedings of IPAC2016, Busan, Korea* (JACoW, Geneva, Switzerland, 2016).
- [20] X. Li *et al.*, *Radiat. Detect. Technol. Methods* **1**, 13 (2017); Y. X. Guo *et al.*, *Radiat. Detect. Technol. Methods* **1**, 15 (2017); P. Cao *et al.*, *Nucl. Instrum. Methods Phys. Res., Sect. A* **953**, 163053 (2020).
- [21] M. Ablikim *et al.* (BESIII Collaboration), arXiv:2203.03133.
- [22] M. Ablikim *et al.* (BESIII Collaboration), arXiv:2205.04809.
- [23] M. Ablikim *et al.* (BESIII Collaboration), *Chin. Phys. C* **45**, 103001 (2021).
- [24] S. Agostinelli *et al.* (GEANT4 Collaboration), *Nucl. Instrum. Methods Phys. Res., Sect. A* **506**, 250 (2003).
- [25] Z. Y. Deng *et al.*, *Chin. Phys. C* **30**, 371 (2006).
- [26] D. J. Lange, *Nucl. Instrum. Methods Phys. Res., Sect. A* **462**, 152 (2001); R. G. Ping, *Chin. Phys. C* **32**, 243 (2008).
- [27] S. Jadach, B. F. L. Ward, and Z. Was, *Phys. Rev. D* **63**, 113009 (2001).
- [28] E. Richter-Was, *Phys. Lett. B* **303**, 163 (1993).
- [29] M. Ablikim *et al.* (BESIII Collaboration), *Phys. Rev. D* **102**, 012009 (2020).
- [30] M. Ablikim *et al.* (BESIII Collaboration), *Phys. Rev. Lett.* **119**, 072001 (2017).
- [31] <https://github.com/mashephe/AmpTools>.
- [32] X. Y. Zhou, S. X. Du, G. Li, and C. P. Shen, *Comput. Phys. Commun.* **258**, 107540 (2021).
- [33] F. A. Berends, P. H. Daverveldt, and R. Kleiss, *Comput. Phys. Commun.* **40**, 271 (1986).
- [34] F. A. Berends, P. H. Daverveldt, and R. Kleiss, *Comput. Phys. Commun.* **40**, 285 (1986).
- [35] A. Hocker *et al.* arXiv:physics/0703039.
- [36] P. A. Zyla *et al.* (Particle Data Group), *Theor. Exp. Phys.* **2020**, 083C01 (2020).
- [37] W. Sun, T. Liu, M. Jing, L. Wang, B. Zhong, and W. Song, *Front. Phys.* **16**, 64501 (2021).
- [38] M. Ablikim *et al.* (BESIII Collaboration), *Phys. Rev. D* **87**, 012002 (2013).
- [39] J. Adam *et al.* (STAR Collaboration), *Phys. Rev. D* **99**, 051102 (2019).
- [40] M. Ablikim *et al.* (BESIII Collaboration), arXiv:2204.07800.
- [41] E. V. Abakumova *et al.*, *Nucl. Instrum. Methods Phys. Res., Sect. A* **659**, 21 (2011).